

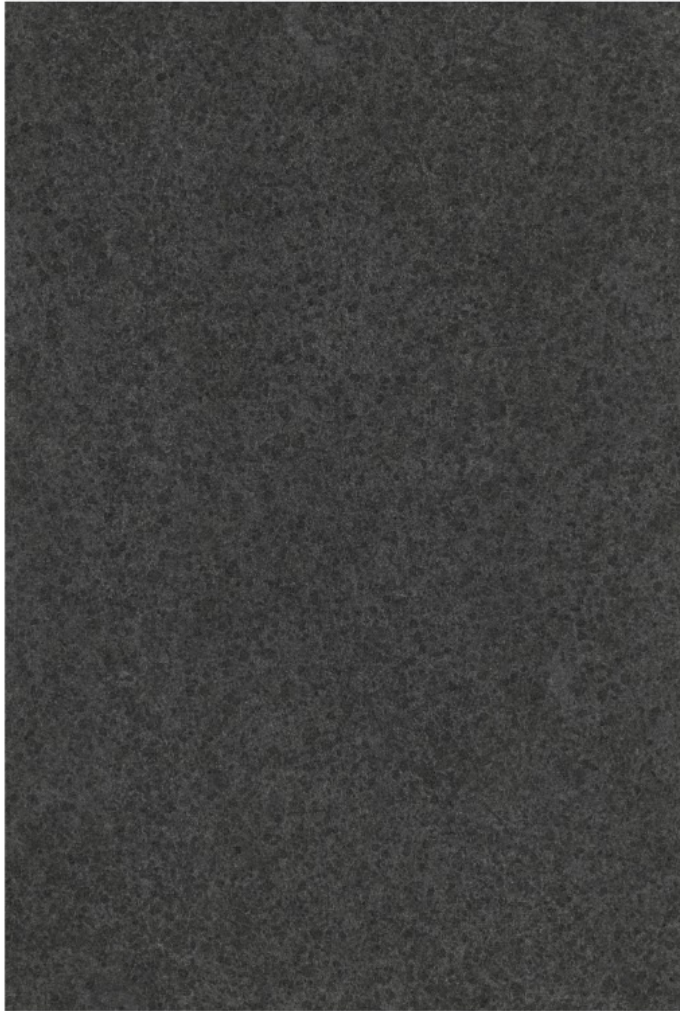


pallet packing

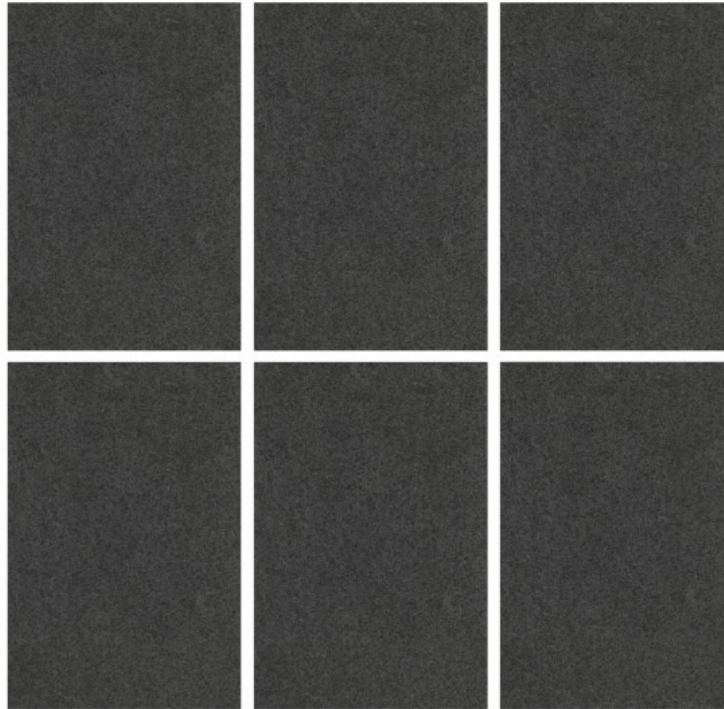
SIZE	PCS/CRATE	M2/PCS	SQFT/PCS	MT/CRATE	SQFT/CRATE	IN KGS/CRATE	CRATE/CTN	IN KGS/PLT	IN KGS/CTN
600x900 mm.	13	0.54	5.81	7.02	75.56	530.40			
600x600 mm.	13	0.36	3.88	4.68	50.38	235.76			
600x296 mm.	13	0.18	1.94	2.34	25.18	58.92	36	730	26280
296x296 mm.	9	0.09	0.97	0.81	8.71	7.06			
	48			14.85	159.824	832.1388			

20mm thickness
Heavy Duty Outdoor Tiles

COLOR CODE:- PSM 01



20mm thickness
600x900 mm.
Heavy Duty Outdoor Tiles



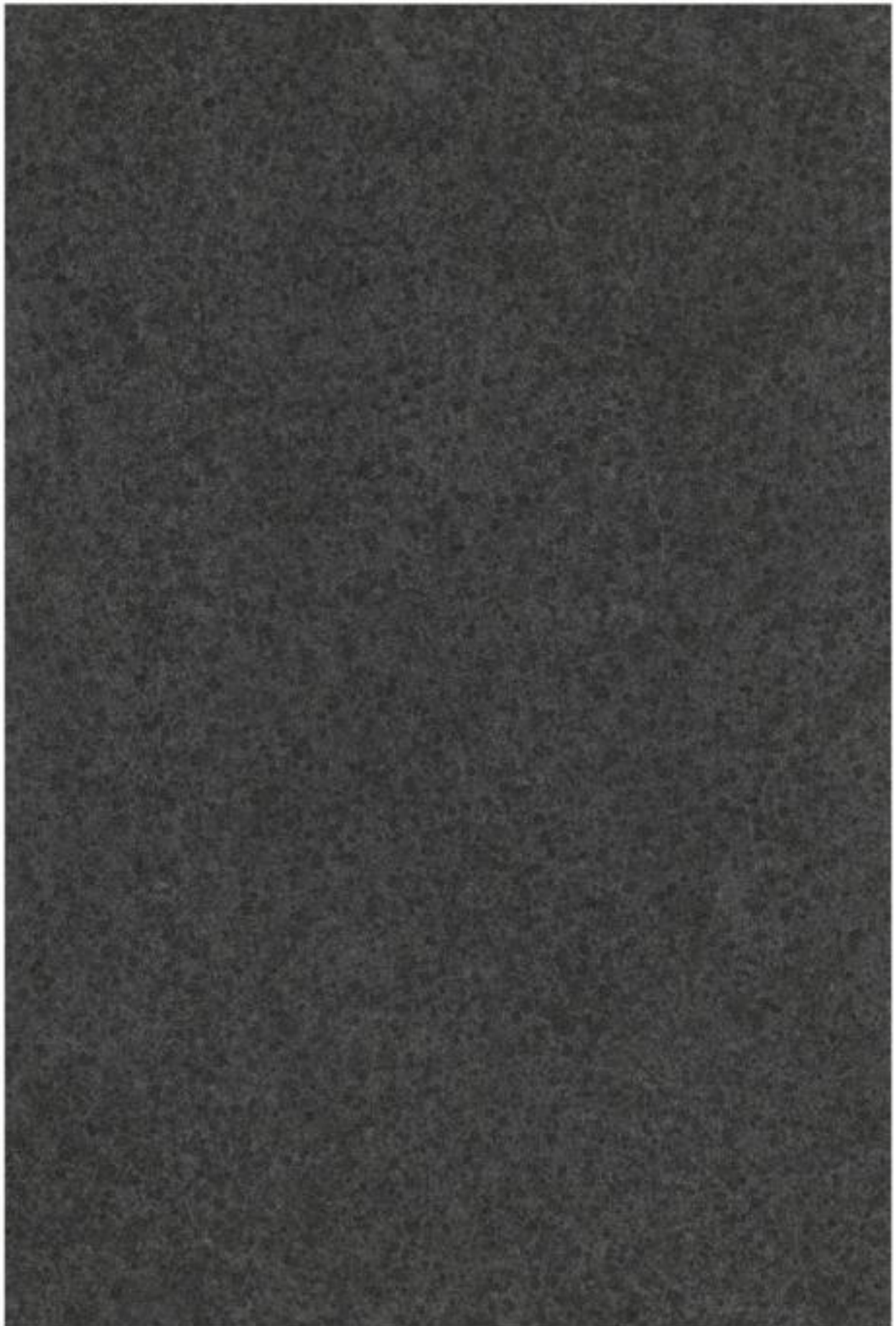
pallet packing

SIZE	WEIGHT/BOX	PCS/BOX	WEIGHT/PLT	BOXES/ EMPTY PLT	PLT/CTN	BOXES/CTN	MT ² /BOX	MT ² /PLT	MT ² /CTN	WEIGHT/CTN
600x900 mm. 20mm	24.5 kg.	1	30 kg.	40	28	1120	0.54	21.6	604.8	27486

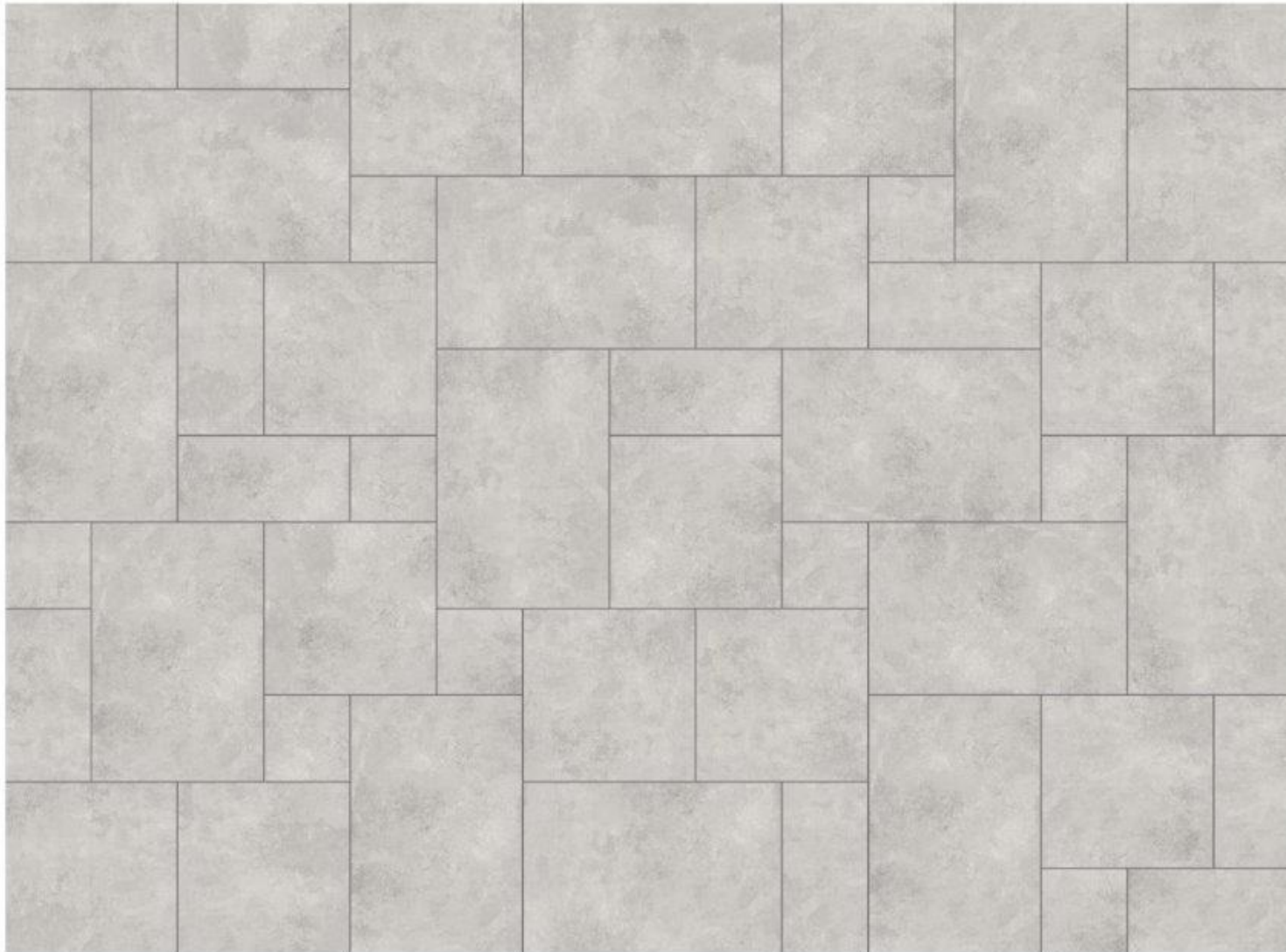
COLOR CODE:- PSM 01



COLOR CODE:- PSM 01



COLOR CODE:- PSM 01



20mm thickness
Heavy Duty Outdoor Tiles

4 size Patio pack

13 No. 900x600 mm.	13 No. 600x297 mm.
13 No. 600x600 mm.	9 No. 297x297 mm.

pallet packing

MT/ CRATE	SQFT/ CRATE	IN KGS/ CRATE	CRATE/ CTN	IN KGS/ CTN
14.85	159.824	750	36	27000 kgs.

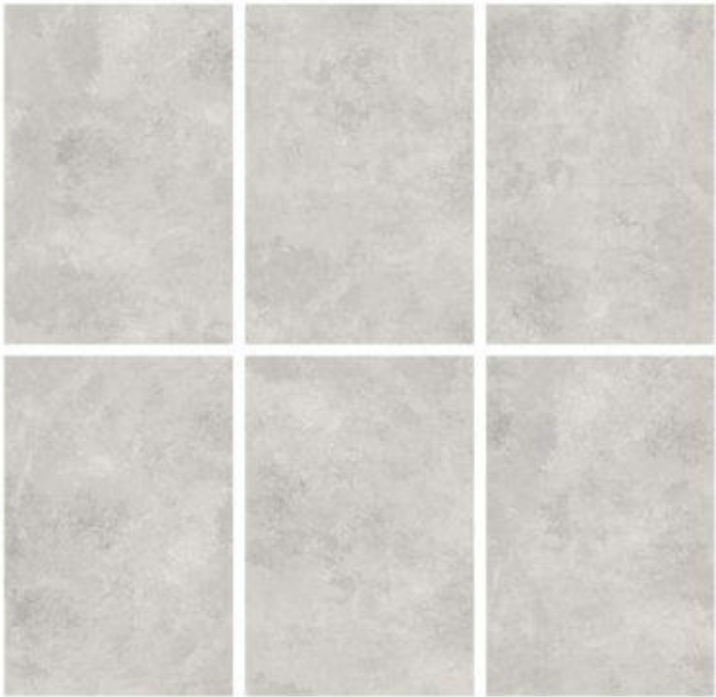
COLOR CODE:- PSM 02



CEMENTINO ASH



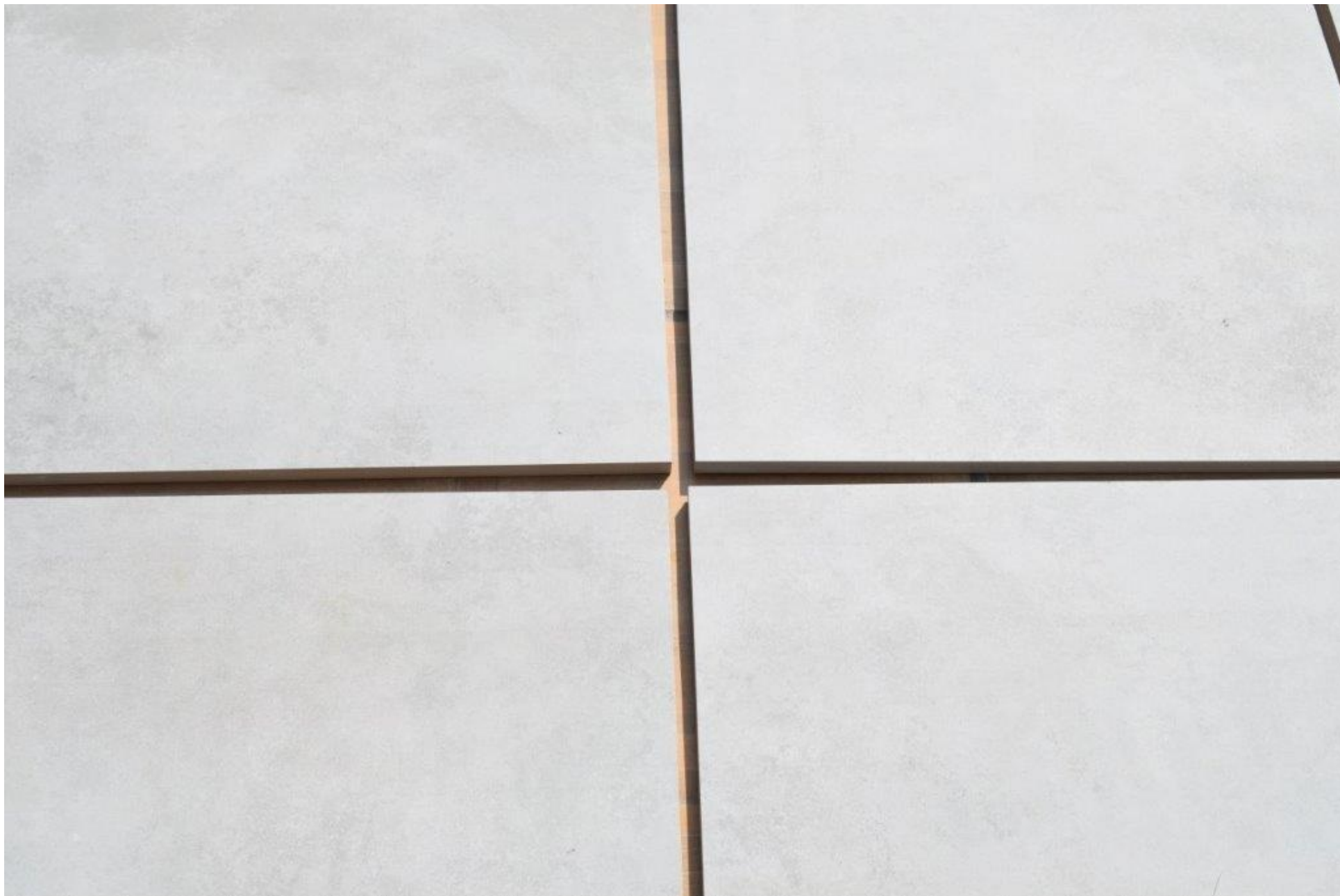
20mm thickness
600x900 mm.
Heavy Duty Outdoor Tiles



pallet packing

SIZE	WEIGHT/BOX	PCS/BOX	WEIGHT/PLT	BOXES/ EMPTY PLT	PLT/CTN	BOXES/CTN	MT/BOX	MT/PLT	MT/CTN	WEIGHT/CTN
600x900 mm. 20mm	24.5 kg.	1	30 kg.	40	28	1120	0.54	21.6	604.8	27480

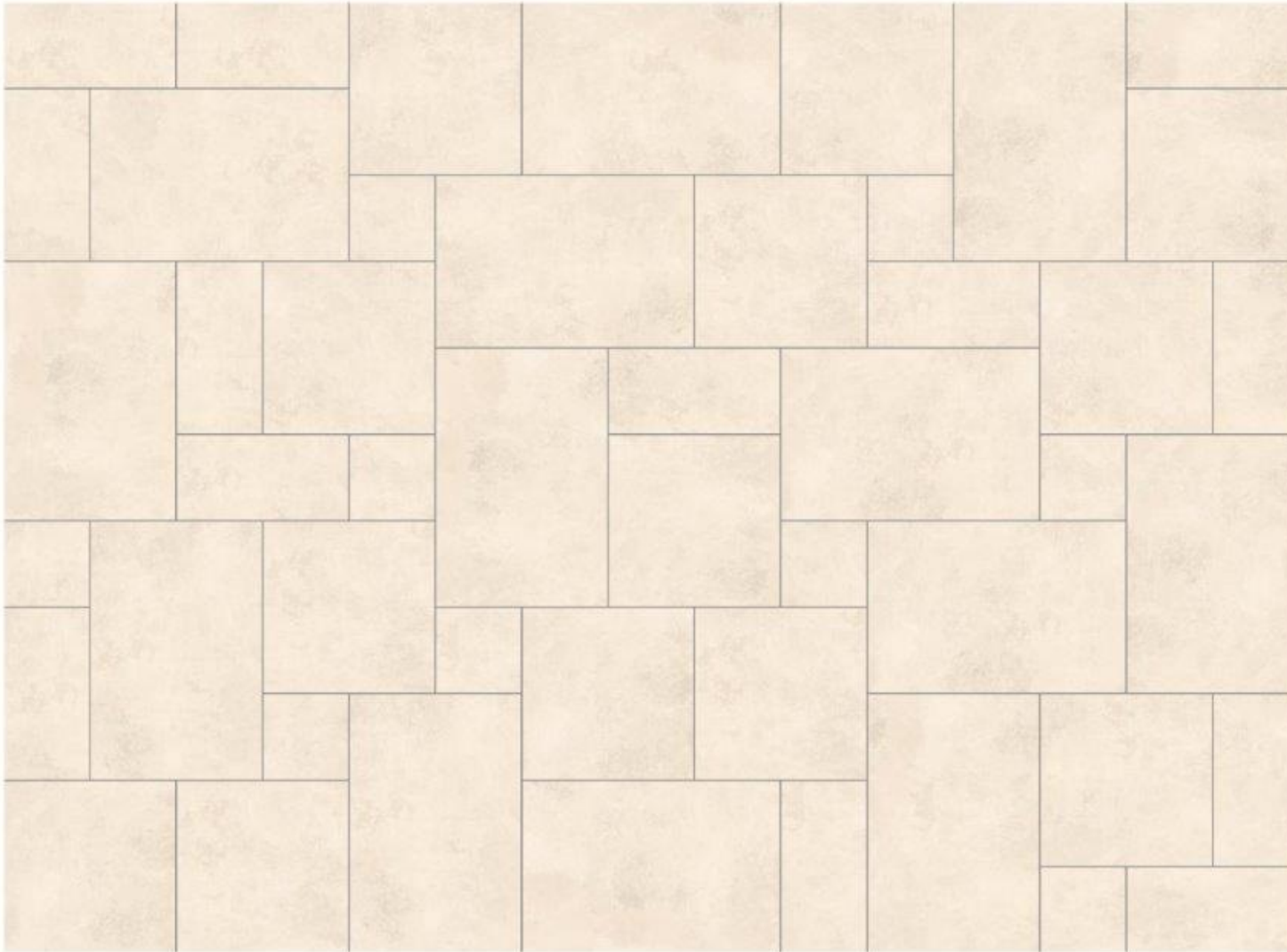
COLOR CODE:- PSM 02



COLOR CODE:- PSM 02



COLOR CODE:- PSM 02



20mm thickness
Heavy Duty Outdoor Tiles

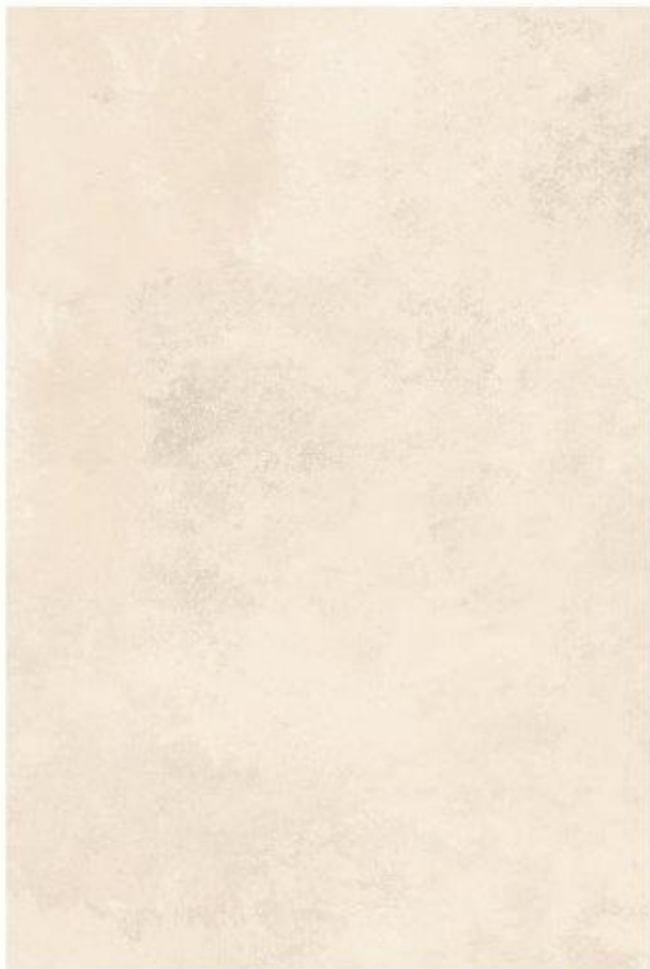
4 size Patio pack

13 No. 900x600 mm.	13 No. 600x297 mm.
13 No. 600x600 mm.	9 No. 297x297 mm.

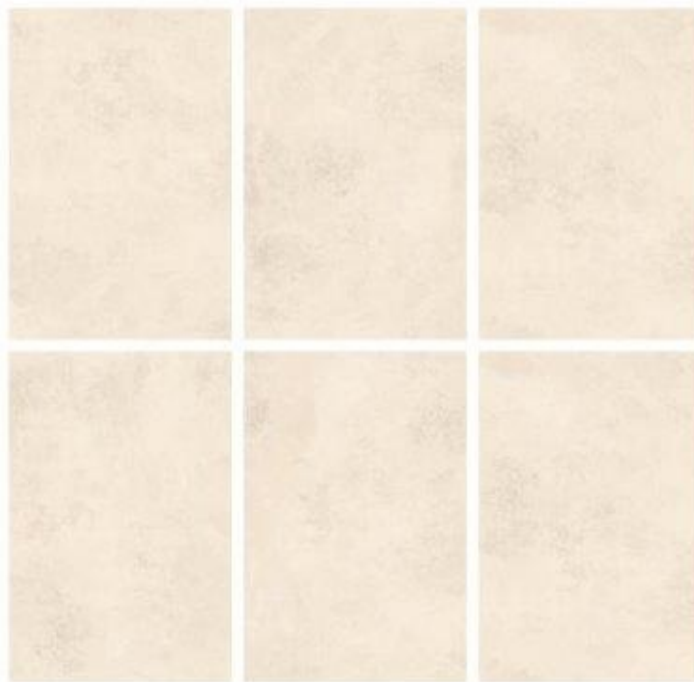
pallet packing

MT/ CRATE	SQFT/ CRATE	IN KGS/ CRATE	CRATE/ CTN	IN KGS/ CTN
14.85	158.824	750	36	27000 kgs.

COLOR CODE:- PSM 03



20mm thickness
600x900 mm.
Heavy Duty Outdoor Tiles



pallet packing

SIZE	WEIGHT/BOX	PCS/BOX	WEIGHT/PLT	BOXES/ EMPTY PLT	PLT/CTN	BOXES/CTN	MT/BOX	MT/PLT	MT/CTN	WEIGHT/CTN
600x900 mm 20mm	24.5 kg.	1	30 kg.	40	28	1120	0.54	21.6	804.8	27493

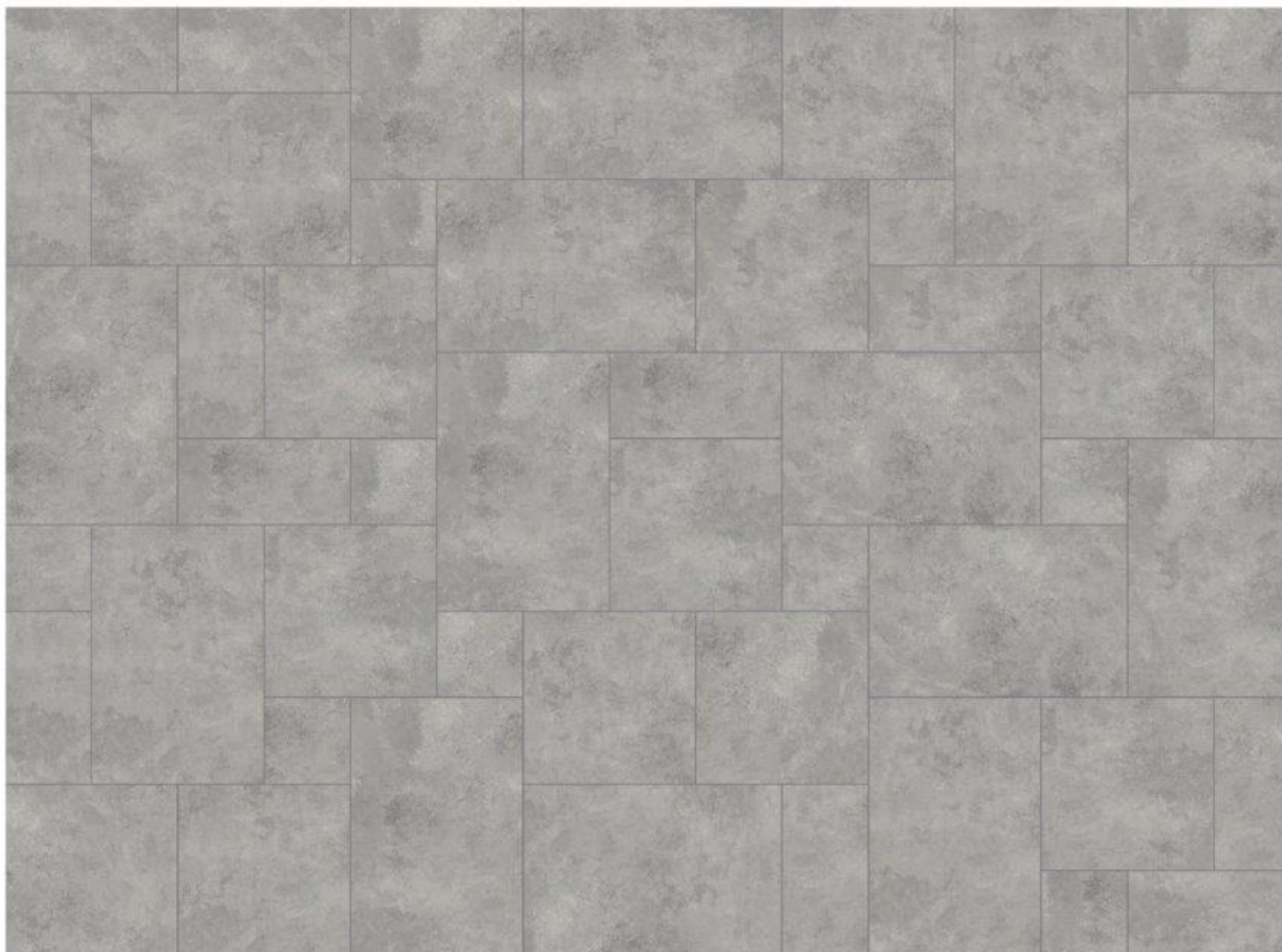
COLOR CODE:- PSM 03



COLOR CODE:- PSM 03



COLOR CODE:- PSM 03



20mm thickness
Heavy Duty Outdoor Tiles

4 size Patio pack

13 No. 900x600 mm.	13 No. 600x297 mm.
13 No. 600x600 mm.	9 No. 297x297 mm.

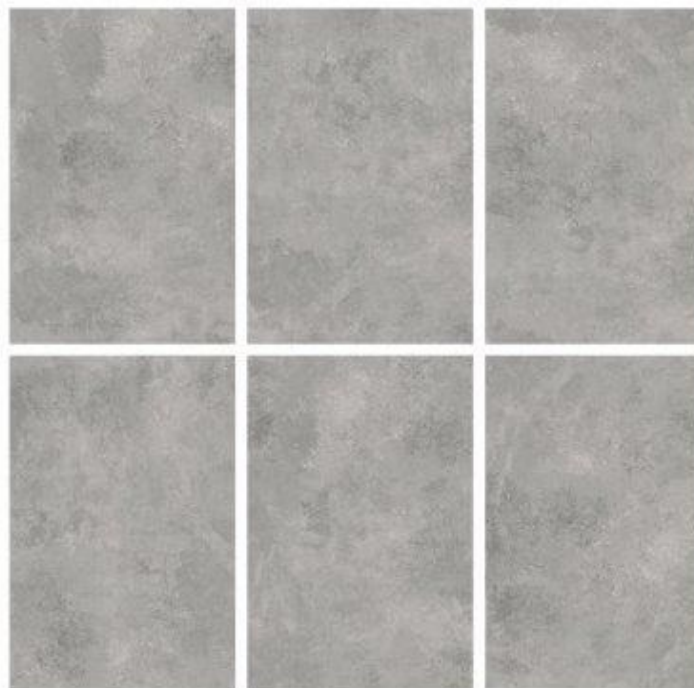
pallet packing

MT/ CRATE	SQFT/ CRATE	IN KGS/ CRATE	CRATE/ CTN	IN KGS/ CTN
14.85	159.824	750	36	27000 kgs.

COLOR CODE:- PSM 04



20mm thickness
600x900 mm.
Heavy Duty Outdoor Tiles



palet packing

SIZE	WEIGHT/BOX	PCS/BOX	WEIGHT/PLT	BOXES/ EMPTY PLT	PLT/CTN	BOXES/CTN	MT ³ /BOX	MT ³ /PLT	MT ³ /CTN	WEIGHT/CTN
600x900 mm. 20mm	24.5 kg.	1	50 kg.	40	28	1120	0.54	21.6	604.8	27492

COLOR CODE:- PSM 04



COLOR CODE:- PSM 04



COLOR CODE:- PSM 04



20mm thickness
Heavy Duty Outdoor Tiles

4 size Patio pack

13 No. 900x600 mm.	13 No. 600x297 mm.
13 No. 600x600 mm.	9 No. 297x297 mm.

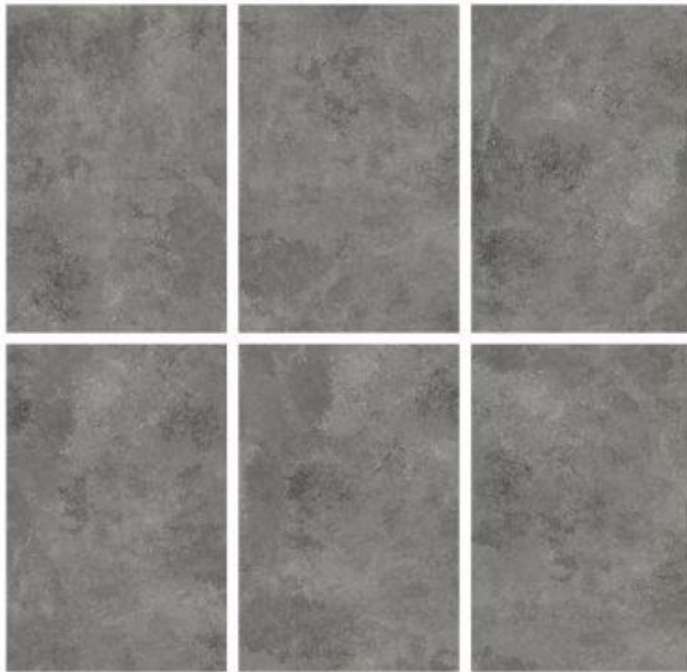
pallet packing

MT/ CRATE	SQFT/ CRATE	IN KGS/ CRATE	CRATE/ CTN	IN KGS/ CTN
14.85	159.824	750	36	27000 kgs.

COLOR CODE:- PSM 05



20mm thickness
600x900 mm.
Heavy Duty Outdoor Tiles



pallet packing

SIZE	WEIGHT/BOX	PCS/BOX	WEIGHT/PLT	BOXES/ EMPTY PLT	PLT/CTN	BOXES/CTN	MT ³ /BOX	MT ³ /PLT	MT ³ /CTN	WEIGHT/CTN
600x900 mm. 20mm	24.5 kg.	1	30 kg.	40	28	1120	0.54	21.6	604.8	27488

COLOR CODE:- PSM 05



COLOR CODE:- PSM 05



COLOR CODE:- PSM 05



20mm thickness
Heavy Duty Outdoor Tiles

4 size Patio pack

13 No. 900x600 mm.	13 No. 600x297 mm.
13 No. 600x600 mm.	9 No. 297x297 mm.

pallet packing

MT/ CRATE	SQFT/ CRATE	IN KGS/ CRATE	CRATE/ CTN	IN KGS/ CTN
14.85	159.824	750	36	27000 kgs.

COLOR CODE:- PSM 06



20mm thickness
600x900 mm.
Heavy Duty Outdoor Tiles



pallet packing

SIZE	WEIGHT/BOX	PGS/BOX	WEIGHT/PLT	BOXES/ EMPTY PLT	PLT/CTN	BOXES/CTN	MT ³ /BOX	MT ³ /PLT	MT ³ /CTN	WEIGHT/CTN
600x900 mm. 20mm	24.5 kg.	1	50 kg.	40	25	1120	0.54	21.6	504.8	27186

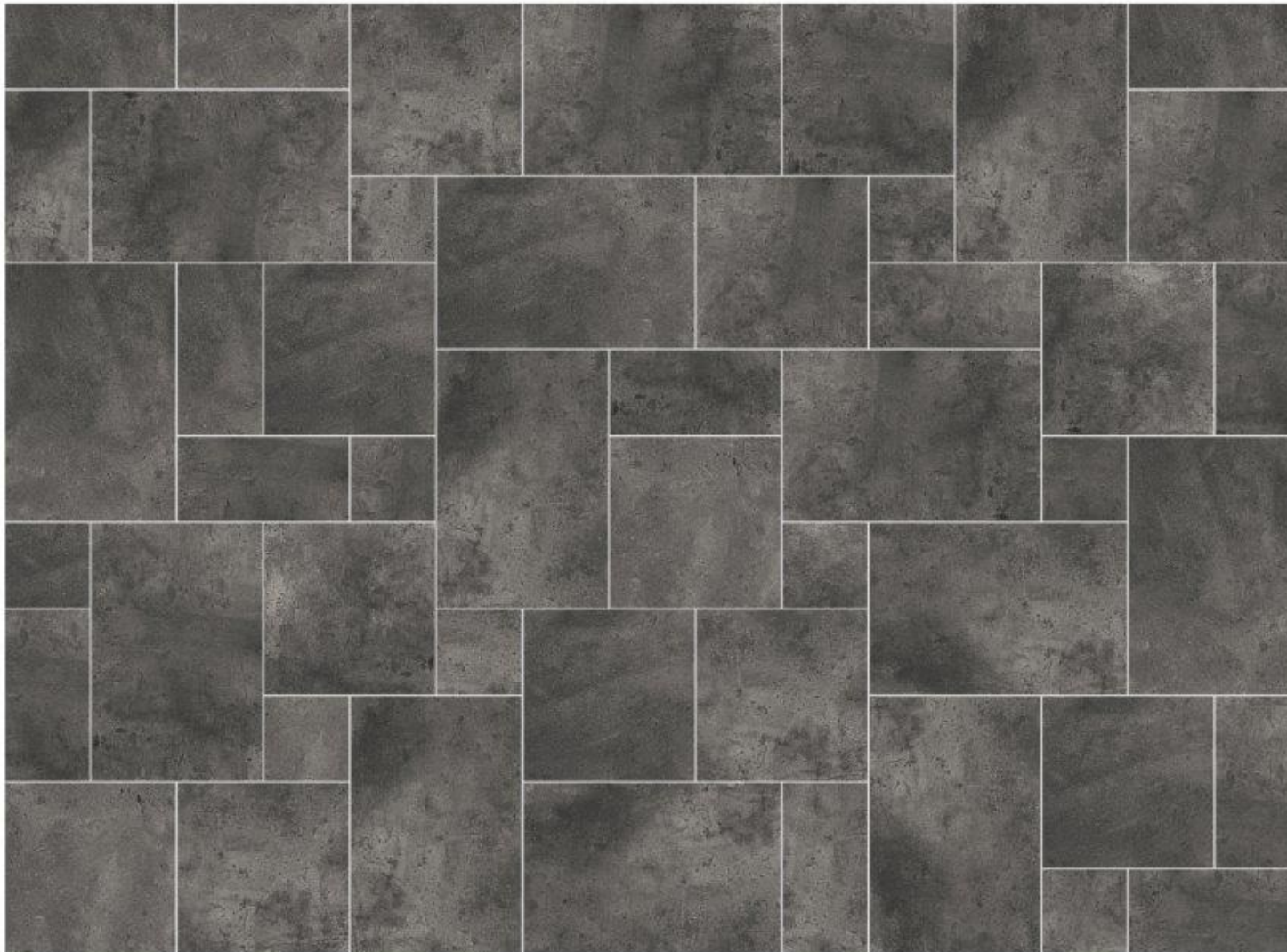
COLOR CODE:- PSM 06



COLOR CODE:- PSM 06



COLOR CODE:- PSM 06



20mm thickness
Heavy Duty Outdoor Tiles

4 size Patio pack

13 No. 900x600 mm.	13 No. 600x297 mm.
13 No. 600x600 mm.	9 No. 297x297 mm.

pallet packing

MT/ CRATE	SQFT/ CRATE	IN KGS/ CRATE	CRATE/ CTN	IN KGS/ CTN
14.85	159.824	750	36	27000 kgs.

COLOR CODE:- PSM 07



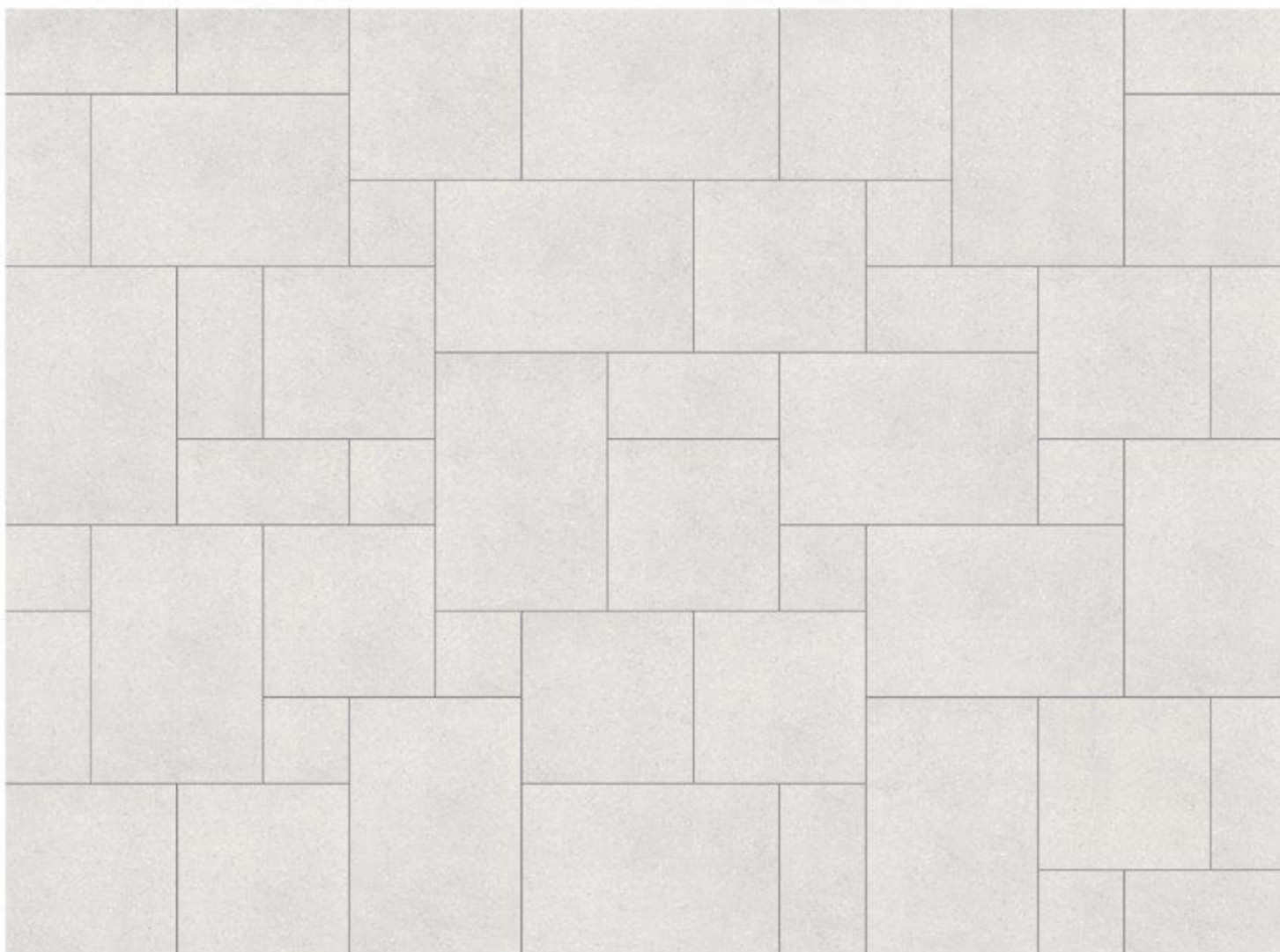
20mm thickness
600x900 mm.
Heavy Duty Outdoor Tiles



palet packing

SIZE	WEIGHT/BOX	PCS/BOX	WEIGHT/PLT	BOXES/ EMPTY PLT	PLT/CTN	BOXES/CTN	MT/BOX	MT/PLT	MT/CTN	WEIGHT/CTN
600x900 mm. 20mm	24.5 kg.	1	30 kg.	40	28	1120	0.54	21.6	604.8	27496

COLOR CODE:- PSM 07



20mm thickness
Heavy Duty Outdoor Tiles

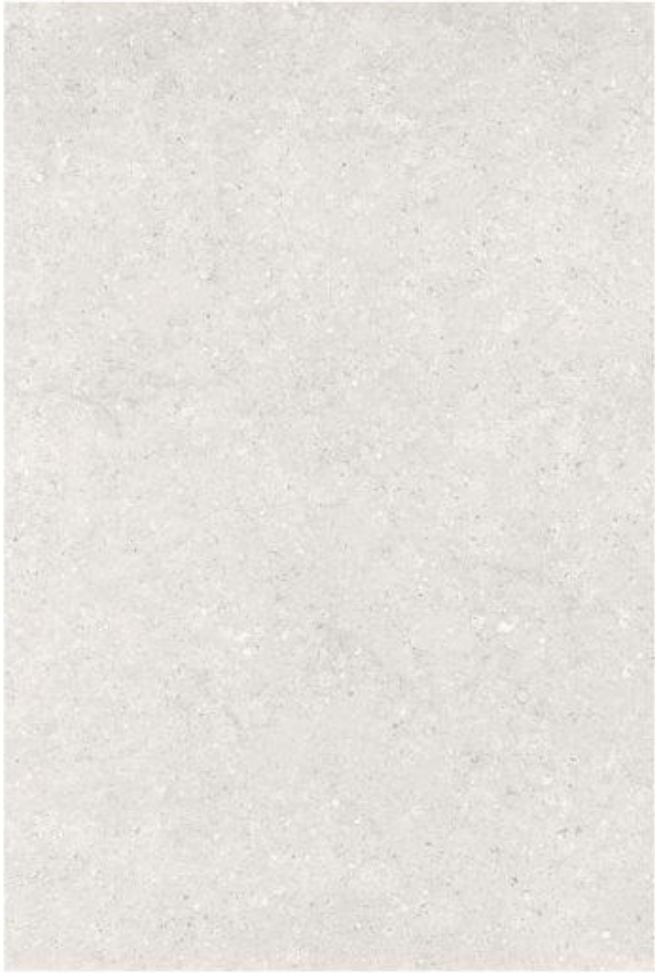
4 size Patio pack

13 No. 900x600 mm.	13 No. 600x297 mm.
13 No. 600x600 mm.	9 No. 297x297 mm.

pallet packing

MT/	SQFT/	IN KGS/	CRATE/	IN KGS/
CRATE	CRATE	CRATE	CTN	CTN
14.65	159.824	750	36	27000 kgs.

COLOR CODE:- PSM 08



20mm thickness
600x900 mm.
Heavy Duty Outdoor Tiles



pallet packing

SIZE	WEIGHT/BOX	PCS/BOX	WEIGHT/PLT	BOXES/ EMPTY PLT	PLT/CTN	BOXES/CTN	MT ³ /BOX	MT ³ /PLT	MT ³ /CTN	WEIGHT/CTN
600x900 mm. 20mm	24.5 kg.	1	30 kg.	40	28	1120	0.54	21.6	604.8	27488

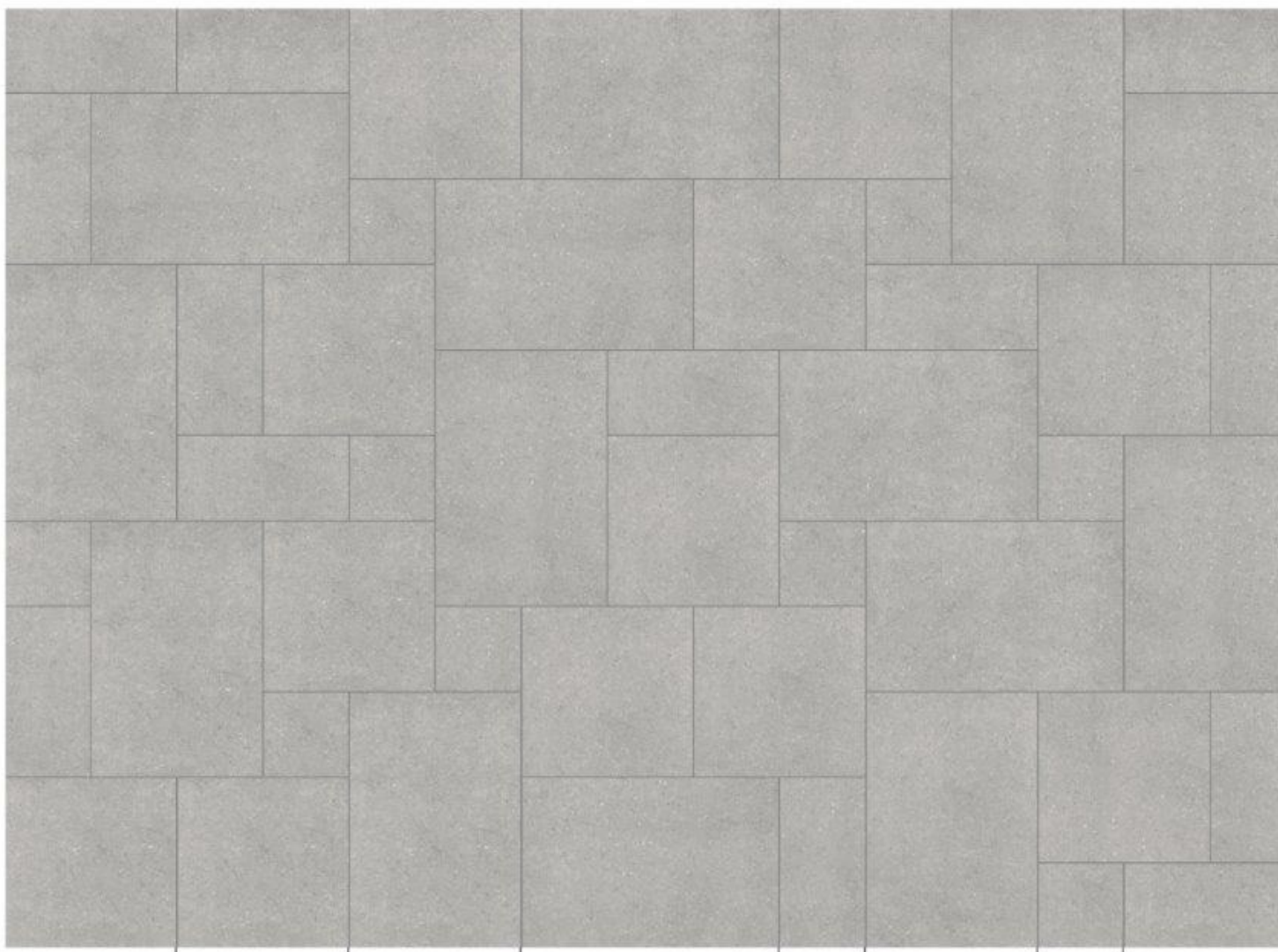
COLOR CODE:- PSM 08



COLOR CODE:- PSM 08



COLOR CODE:- PSM 08



20mm thickness
Heavy Duty Outdoor Tiles

4 size Patio pack

13 No. 900x600 mm.	13 No. 600x297 mm.
13 No. 600x600 mm.	9 No. 297x297 mm.

pallet packing

MT ³ / CRATE	SQFT / CRATE	IN KGS / CRATE	CRATE / CTN	IN KGS / CTN
14.65	159.824	750	36	27000 kgs.

COLOR CODE:- PSM 09



20mm thickness
600x900 mm.
Heavy Duty Outdoor Tiles



palet packing

SIZE	WEIGHT/BOX	PCS/BOX	WEIGHT/PLT	BOXES/ EMPTY PLT	PLT/CTN	BOXES/CTN	MT ³ /BOX	MT ³ /PLT	MT ³ /CTN	WEIGHT/CTN
600x900 mm. 20mm	24.5 kg.	1	30 kg.	40	28	1120	0.54	21.6	604.8	27496

COLOR CODE:- PSM 09



COLOR CODE:- PSM 09



COLOR CODE:- PSM 09



20mm thickness
Heavy Duty Outdoor Tiles

4 size Patio pack

13 No. 900x600 mm.	13 No. 600x297 mm.
13 No. 600x600 mm.	9 No. 297x297 mm.

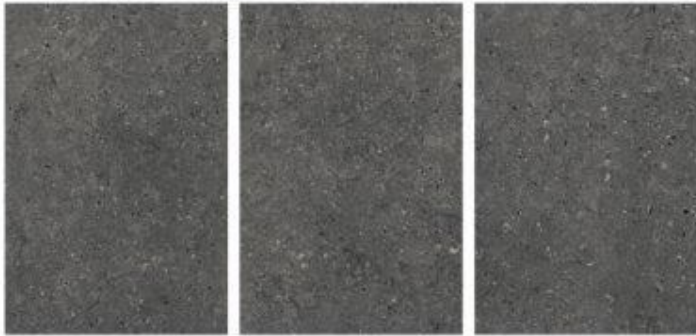
pallet packing

MT/ CRATE	SQFT/ CRATE	IN KGS/ CRATE	CRATE/ CTN	IN KGS/ CTN
14.85	159.824	750	36	27000 kgs.

COLOR CODE:- PSM 10



20mm thickness
600x900 mm.
Heavy Duty Outdoor Tiles



palet packing

SIZE	WEIGHT/BOX	PCS/BOX	WEIGHT/PLT	BOXES/ EMPTY PLT	PLT/CTN	BOXES/CTN	MT/BOX	MT/PLT	MT/CTN	WEIGHT/CTN
600x900 mm. 20mm	24.5 kg.	1	30 kg.	40	28	1120	0.54	21.6	604.8	27493

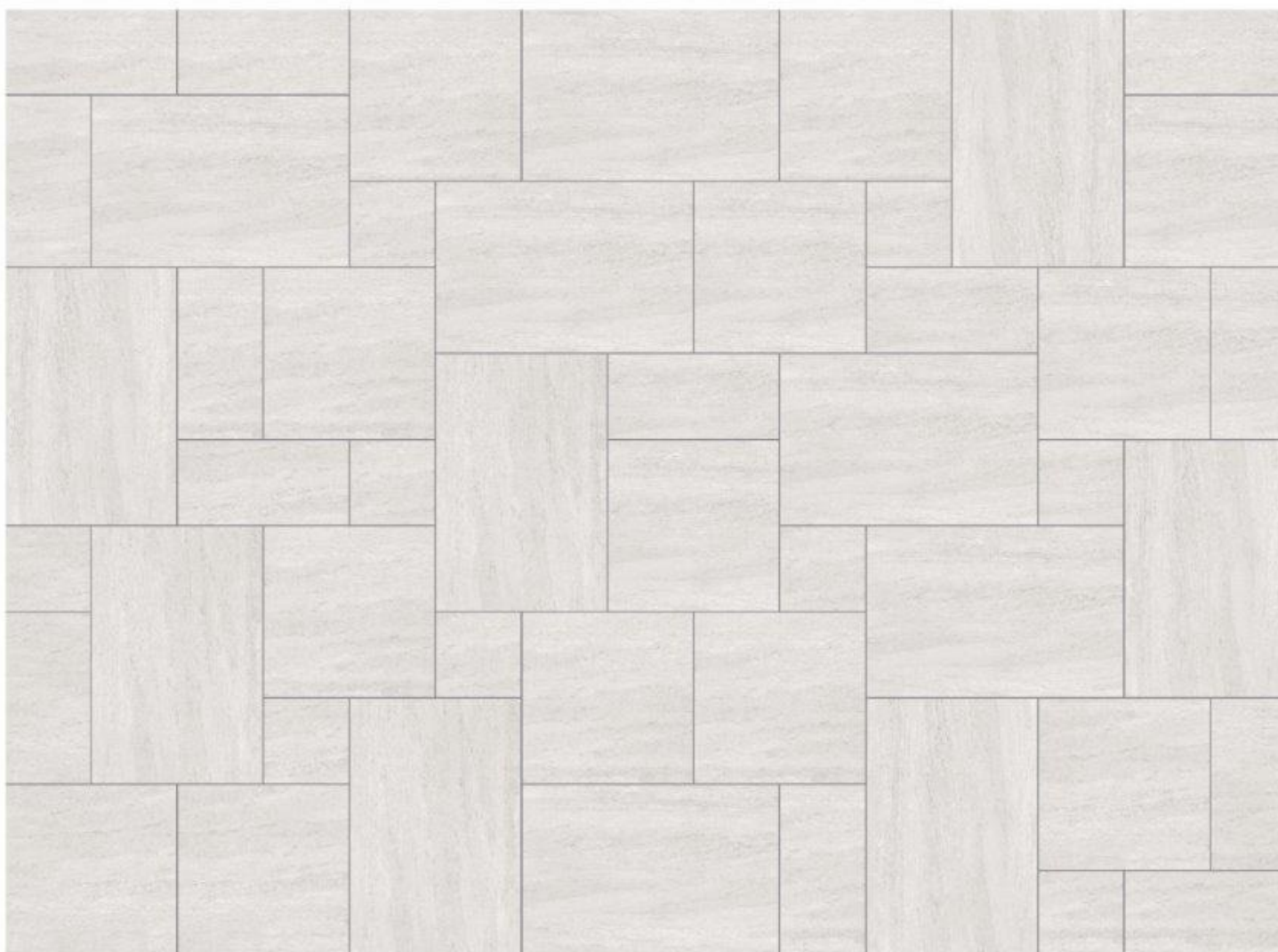
COLOR CODE:- PSM 10



COLOR CODE:- PSM 10



COLOR CODE:- PSM 10



20mm thickness
Heavy Duty Outdoor Tiles

4 size Patio pack

13 No. 900x600 mm.	13 No. 600x297 mm.
13 No. 600x600 mm.	9 No. 297x297 mm.

pallet packing

MT ³ / CRATE	SQFT/ CRATE	IN KGS/ CRATE	CRATE/ CTN	IN KGS/ CTN
14.85	159.824	750	36	27000 kgs.

COLOR CODE:- PSM 11



20mm thickness
600x900 mm.
Heavy Duty Outdoor Tiles



pallet packing

SIZE	WEIGHT/BOX	PCS/BOX	WEIGHT/PLT	BOXES/ EMPTY PLT	PLT/CTN	BOXES/CTN	MT ³ /BOX	MT ³ /PLT	MT ³ /CTN	WEIGHT/CTN
600x900 mm. 20mm	24.5 kg.	1	30 kg.	40	28	1120	0.54	21.6	604.8	27488

COLOR CODE:- PSM 11



COLOR CODE:- PSM 11



COLOR CODE:- PSM 11



20mm thickness
Heavy Duty Outdoor Tiles

4 size Patio pack	
13 No. 900x600 mm.	13 No. 600x297 mm.
13 No. 600x600 mm.	9 No. 297x297 mm.

pallet packing

MT/	SOFT/	IN KGS/	CRATE/	IN KGS/
CRATE	CRATE	CRATE	CTN	CTN
14.85	159.824	750	36	27000 kgs.

COLOR CODE:- PSM 12



20mm thickness
600x900 mm.
Heavy Duty Outdoor Tiles



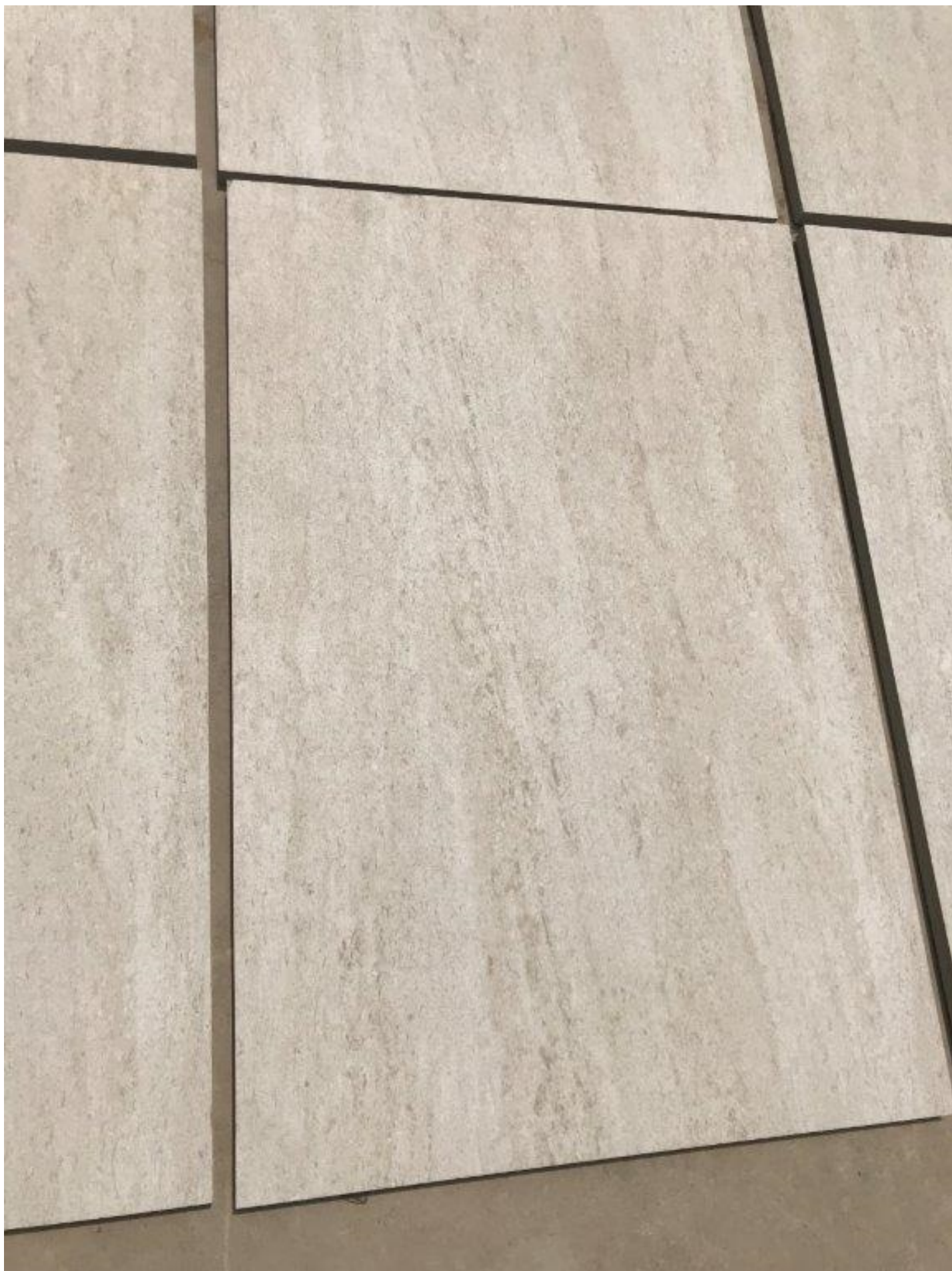
palette packing

SIZE	WEIGHT/BOX	PCS/BOX	WEIGHT/PLT	BOXES/ EMPTY PLT	PLT/CTN	BOXES/CTN	MT ³ /BOX	MT ³ /PLT	MT ³ /CTN	WEIGHT/CTN
600x900 mm. 20mm	24.5 kg.	1	30 kg.	40	28	1120	0.54	21.6	604.8	27496

COLOR CODE:- PSM 12



COLOR CODE:- PSM 12



COLOR CODE:- PSM 12



20mm thickness
Heavy Duty Outdoor Tiles

4 size Patio pack

13 No. 900x600 mm.	13 No. 600x297 mm.
13 No. 600x600 mm.	9 No. 297x297 mm.

pallet packing

MT/ CRATE	SQFT/ CRATE	IN KGS/ CRATE	CRATE/ CTN	IN KGS/ CTN
14.85	159.624	750	36	27000 kgs.

COLOR CODE:- PSM 13



20mm thickness
600x900 mm.
Heavy Duty Outdoor Tiles



palette packing

SIZE	WEIGHT/BOX	PCS/BOX	WEIGHT/PLT	BOXES/ EMPTY PLT	PLT/CTN	BOXES/CTN	MT ³ /BOX	MT ³ /PLT	MT ³ /CTN	WEIGHT/CTN
600x900 mm. 20mm	24.5 kg.	1	30 kg.	40	28	1120	0.54	21.6	604.8	27480

COLOR CODE:- PSM 13



COLOR CODE:- PSM 13



COLOR CODE:- PSM 13



20mm thickness
Heavy Duty Outdoor Tiles

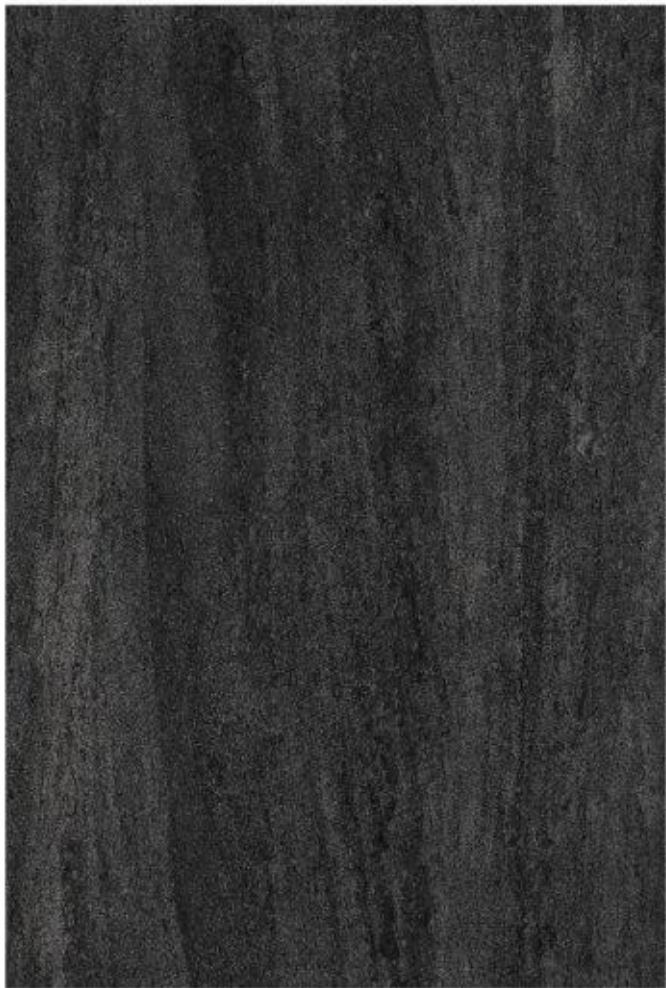
4 size Patio pack

13 No. 900x600 mm.	13 No. 600x297 mm.
13 No. 600x600 mm.	9 No. 297x297 mm.

pallet packing

MTV/ CRATE	SOFT/ CRATE	IN KGS/ CRATE	CRATE/ CTN	IN KGS/ CTN
14.85	159.824	750	36	27000 kgs.

COLOR CODE:- PSM 14



20mm thickness
600x900 mm.
Heavy Duty Outdoor Tiles



palet packing

SIZE	WEIGHT/BOX	PCS/BOX	WEIGHT/PLT	BOXES/ EMPTY PLT	PLT/CTN	BOXES/CTN	MT ³ /BOX	MT ³ /PLT	MT ³ /CTN	WEIGHT/CTN
600x900 mm. 20mm	24.5 kg.	1	30 kg.	40	25	1120	0.54	21.6	504.8	27190

COLOR CODE:- PSM 14



COLOR CODE:- PSM 14



COLOR CODE:- PSM 14



20mm thickness
Heavy Duty Outdoor Tiles

4 size Patio pack

13 No. 900x600 mm.	13 No. 600x297 mm.
13 No. 600x600 mm.	9 No. 297x297 mm.

pallet packing

MT/ CRATE	SOFT/ CRATE	IN KGS/ CRATE	CRATE/ CTN	IN KGS/ CTN
14.85	159.824	750	36	27000 kgs.

COLOR CODE:- PSM 15



20mm thickness
600x900 mm.
Heavy Duty Outdoor Tiles



palette packing

SIZE	WEIGHT/BOX	PCS/BOX	WEIGHT/PLT	BOXES/ EMPTY PLT	PLT/CTN	BOXES/CTN	MT ³ /BOX	MT ³ /PLT	MT ³ /CTN	WEIGHT/CTN
600x900 mm. 20mm	24.5 kg.	1	30 kg.	40	28	1120	0.54	21.6	604.8	27496

COLOR CODE:- PSM 15



COLOR CODE:- PSM 15



COLOR CODE:- PSM 15



20mm thickness
Heavy Duty Outdoor Tiles

4 size Patio pack

13 No. 900x600 mm.	13 No. 600x297 mm.
13 No. 600x600 mm.	9 No. 297x297 mm.

pallet packing

MT/ CRATE	SQFT/ CRATE	IN KGS/ CRATE	CRATE/ CTN	IN KGS/ CTN
14.85	159.824	750	36	27000 kgs.

COLOR CODE:- PSM 16



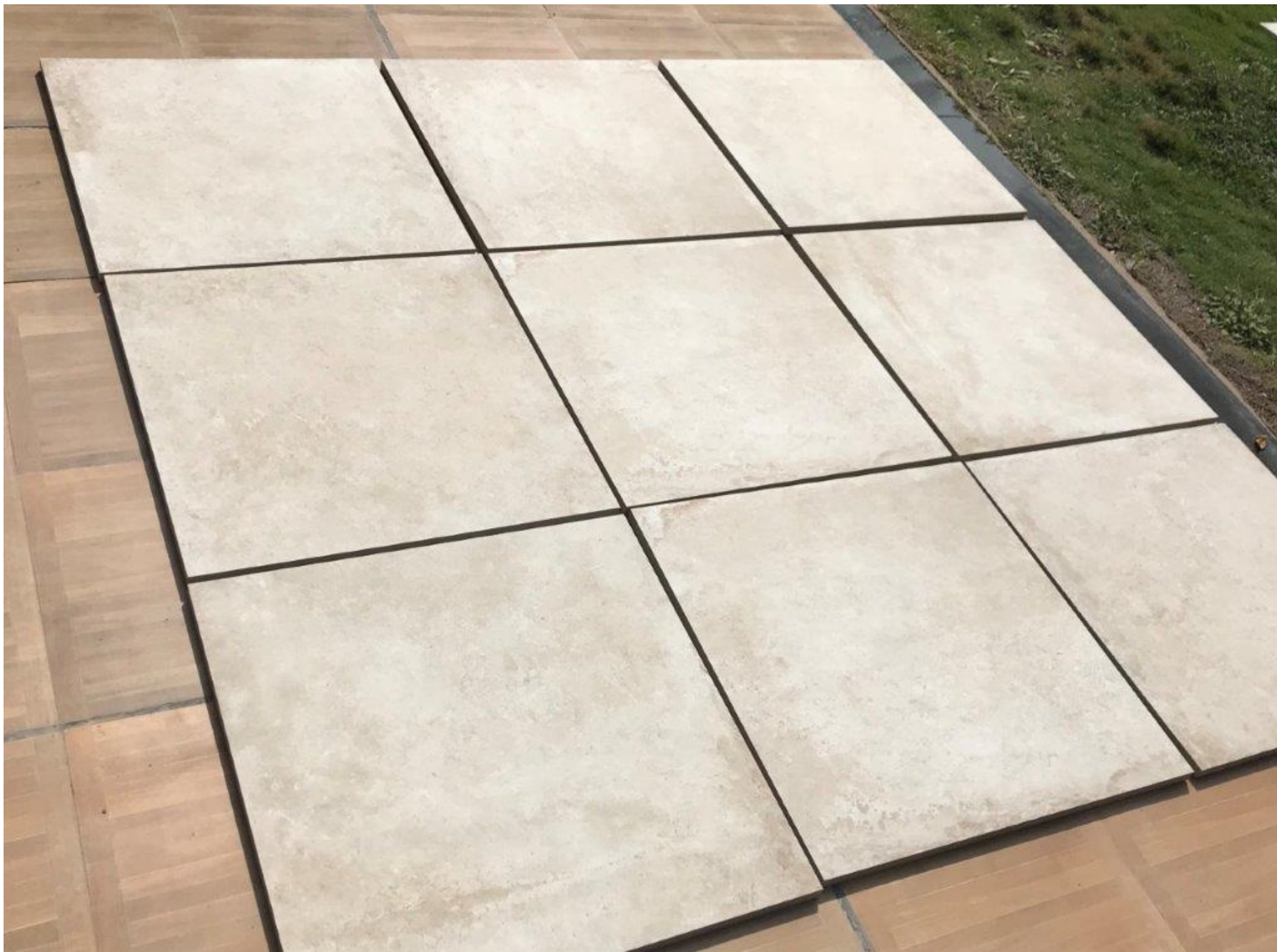
20mm thickness
600x900 mm.
Heavy Duty Outdoor Tiles



palette packing

SIZE	WEIGHT/BOX	PCS/BOX	WEIGHT/PLT	BOXES/ DUTY PLT	PLT/CTN	BOXES/CTN	MT ³ /BOX	MT ³ /PLT	MT ³ /CTN	WEIGHT/CTN
600x900 mm. 20mm	24.5 kg.	1	50 kg.	40	25	1120	0.54	21.6	604.8	27456

COLOR CODE:- PSM 16



COLOR CODE:- PSM 16



COLOR CODE:- PSM 16



20mm thickness
Heavy Duty Outdoor Tiles

4 size Patio pack

13 No. 900x600 mm.	13 No. 600x297 mm.
13 No. 600x600 mm.	9 No. 297x297 mm.

pallet packing

MT/ CRATE	SOFT/ CRATE	IN KGS/ CRATE	CRATE/ CTN	IN KGS/ CTN
14.85	159.824	750	36	27000 kgs.

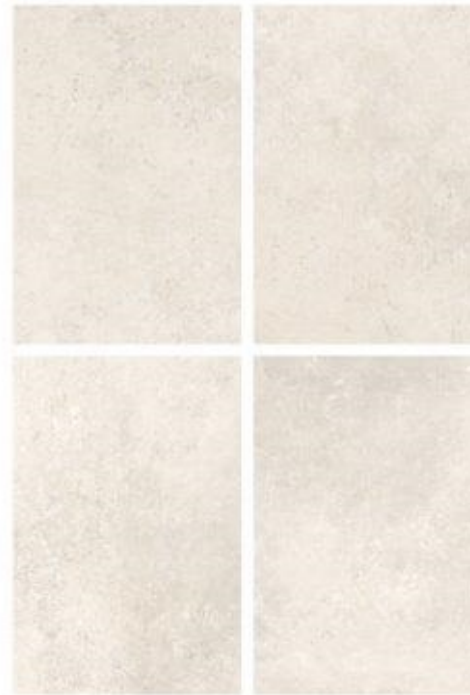
COLOR CODE:- PSM 17



COTTO CREMA



20mm thickness
600x900 mm.
Heavy Duty Outdoor Tiles



palet packing

SIZE	WEIGHT/BOX	PCS/BOX	WEIGHT/PLT	BOXES/ EMPTY PLT	PLT/CTN	BOXES/CTN	MT ³ /BOX	MT ³ /PLT	MT ³ /CTN	WEIGHT/CTN
600x900 mm. 20mm	24.5 kg.	1	30 kg.	40	28	1120	0.54	21.6	604.8	27496

COLOR CODE:- PSM 17



COLOR CODE:- PSM 17



COLOR CODE:- PSM 17



20mm thickness
Heavy Duty Outdoor Tiles

4 size Patio pack	
13 No. 900x600 mm.	13 No. 600x297 mm.
13 No. 600x600 mm.	9 No. 297x297 mm.

pallet packing

MT ³ /CRATE	SQFT/CRATE	IN KGS/CRATE	CRATE/CTN	IN KGS/CTN
14.85	159.824	750	36	27000 kgs.

COLOR CODE:- PSM 18



20mm thickness
600x900 mm.
Heavy Duty Outdoor Tiles



palet packing

SIZE	WEIGHT/BOX	PCS/BOX	WEIGHT/PLT	BOXES/EMPTY PLT	PLT/CTN	BOXES/CTN	MT ³ /BOX	MT ³ /PLT	MT ³ /CTN	WEIGHT/CTN
600x900 mm. 20mm	24.5 kg.	1	30 kg.	40	28	1120	0.54	21.6	604.8	27480

COLOR CODE:- PSM 18



COLOR CODE:- PSM 18



COLOR CODE:- PSM 18



20mm thickness
Heavy Duty Outdoor Tiles

4 size Patio pack

13 No. 900x600 mm.	13 No. 600x297 mm.
13 No. 600x600 mm.	9 No. 297x297 mm.

pallet packing

MT/ CRATE	SOFT/ CRATE	IN KGS/ CRATE	CRATE/ CTN	IN KGS/ CTN
14.85	159.824	750	36	27000 kgs.

COLOR CODE:- PSM 19



20mm thickness
600x900 mm.
Heavy Duty Outdoor Tiles



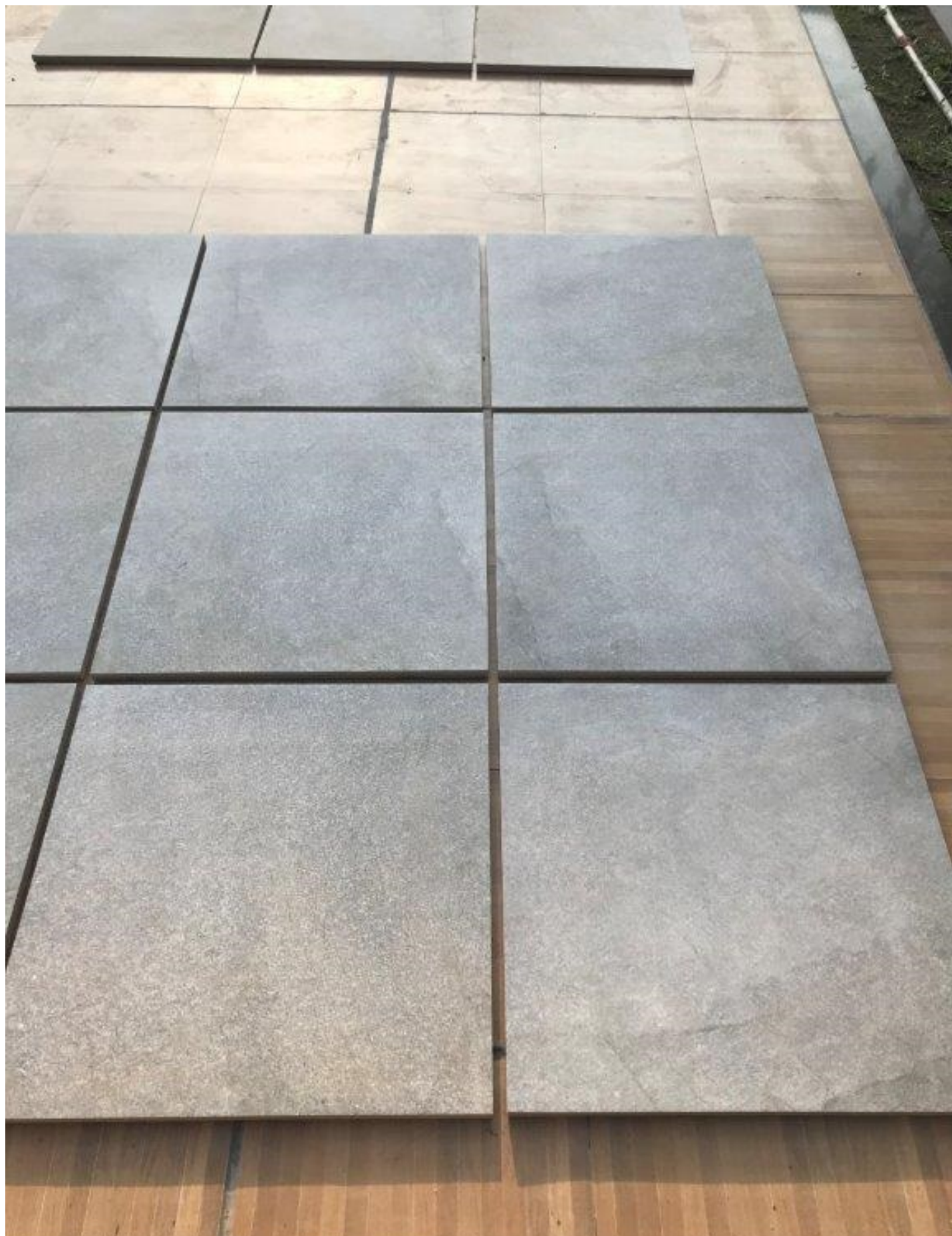
palet packing

SIZE	WEIGHT/BOX	PCS/BOX	WEIGHT/PLT	BOXES/EMPTY PLT	PLT/CTN	BOXES/CTN	MT ³ /BOX	MT ³ /PLT	MT ³ /CTN	WEIGHT/CTN
600x900 mm. 20mm	24.5 kg.	1	30 kg.	40	28	1120	0.54	21.6	604.8	27480

COLOR CODE:- PSM 19



COLOR CODE:- PSM 19



COLOR CODE:- PSM 19



20mm thickness
Heavy Duty Outdoor Tiles

4 size Patio pack

13 No. 900x600 mm.	13 No. 600x297 mm.
13 No. 600x600 mm.	9 No. 297x297 mm.

pallet packing

MT/ CRATE	SQFT/ CRATE	IN KGS/ CRATE	CRATE/ CTN	IN KGS/ CTN
14.85	159.824	750	36	27000 kgs.

COLOR CODE:- PSM 20



20mm thickness
600x900 mm.
Heavy Duty Outdoor Tiles



palet packing

SIZE	WEIGHT/BOX	PCS/BOX	WEIGHT/PLT	BOXES/ EMPTY PLT	PLT/CTN	BOXES/CTN	MT ³ /BOX	MT ³ /PLT	MT ³ /CTN	WEIGHT/CTN
600x900 mm. 20mm	24.5 kg.	1	30 kg.	40	28	1120	0.54	21.6	604.8	27480

COLOR CODE:- PSM 20



COLOR CODE:- PSM 20



COLOR CODE:- PSM 20



20mm thickness
Heavy Duty Outdoor Tiles

4 size Patio pack

13 No. 900x600 mm.	13 No. 600x297 mm.
13 No. 600x600 mm.	9 No. 297x297 mm.

pallet packing

MT/CRATE	SQFT/CRATE	IN KGS/CRATE	CRATE/CTN	IN KGS/CTN
14.85	159.824	750	36	27000 kgs.

COLOR CODE:- PSM 21



20mm thickness
600x900 mm.
Heavy Duty Outdoor Tiles



palet packing

SIZE	WEIGHT/BOX	PCS/BOX	WEIGHT/PLT	BOXES/EMPTY PLT	PLT/CTN	BOXES/CTN	MT/BOX	MT/PLT	MT/CTN	WEIGHT/CTN
600x900 mm. 20mm	24.5 kg	5	30 kg	40	25	1120	0.34	2.6	64.8	27480

COLOR CODE:- PSM 21



COLOR CODE:- PSM 21



COLOR CODE:- PSM 21



20mm thickness
Heavy Duty Outdoor Tiles

4 size Patio pack

13 No. 900x600 mm.	13 No. 600x297 mm.
13 No. 600x600 mm.	9 No. 297x297 mm.

pallet packing

MT/ / CRATE	SQFT/ CRATE	IN KGS/ CRATE	CRATE/ CTN	IN KGS/ CTN
14.85	159.824	750	36	27000 kgs.

COLOR CODE:- PSM 22



20mm thickness
600x900 mm.
Heavy Duty Outdoor Tiles



palet packing

SIZE	WEIGHT/BOX	PCS/BOX	WEIGHT/PLT	BOXES/EMPTY PLT	PLT/CTN	BOXES/CTN	MT/BOX	MT/PLT	MT/CTN	WEIGHT/CTN
600x900 mm 20mm	24.5 kg	1	30 kg	40	25	1120	0.54	21.6	604.8	27480

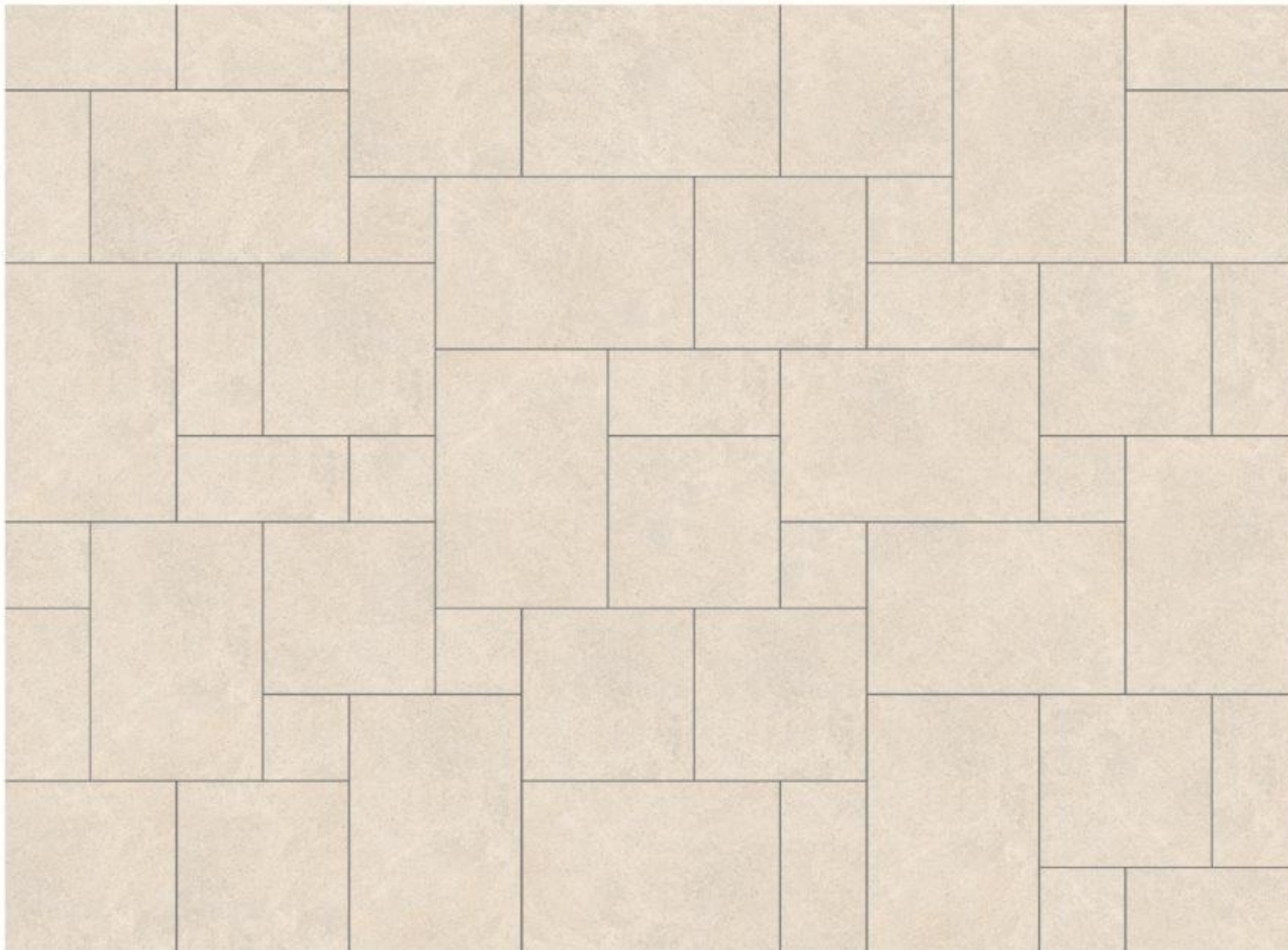
COLOR CODE:- PSM 22



COLOR CODE:- PSM 22



COLOR CODE:- PSM 22



20mm thickness
Heavy Duty Outdoor Tiles

4 size Patio pack	
13 No. 900x600 mm.	13 No. 600x297 mm.
13 No. 600x600 mm.	9 No. 297x297 mm.

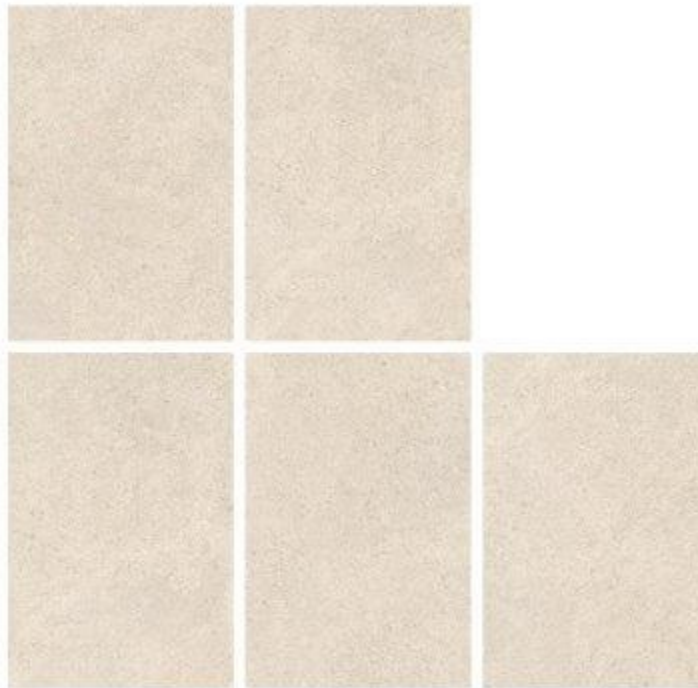
pallet packing

MT/CRATE	SOFT/CRATE	IN KGS/CRATE	CRATE/CTN	IN KGS/CTN
14.85	159.824	750	36	27000 kgs.

COLOR CODE:- PSM 23



20mm thickness
600x900 mm.
Heavy Duty Outdoor Tiles



palet packing

SIZE	WEIGHT/BOX	PCS/BOX	WEIGHT/PLT	BOXES/ EMPTY PLT	PLT/CTN	BOXES/CTN	MT/BOX	MT/PLT	MT/CTN	WEIGHT/CTN
600x900 mm. 20mm	24.5 kg	1	30 kg	40	28	1120	0.34	21.0	604.8	27400

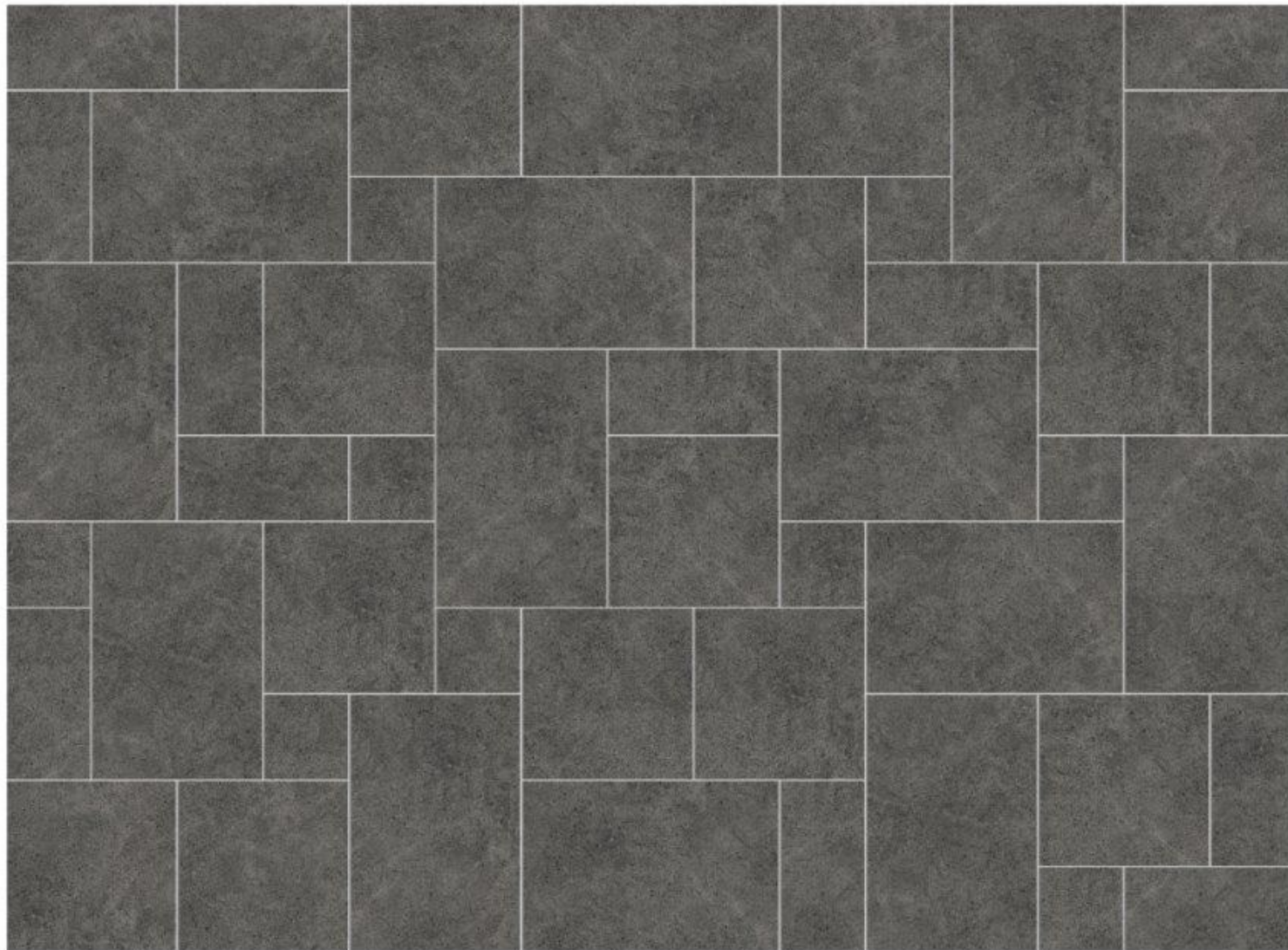
COLOR CODE:- PSM 23



COLOR CODE:- PSM 23



COLOR CODE:- PSM 23



20mm thickness
Heavy Duty Outdoor Tiles

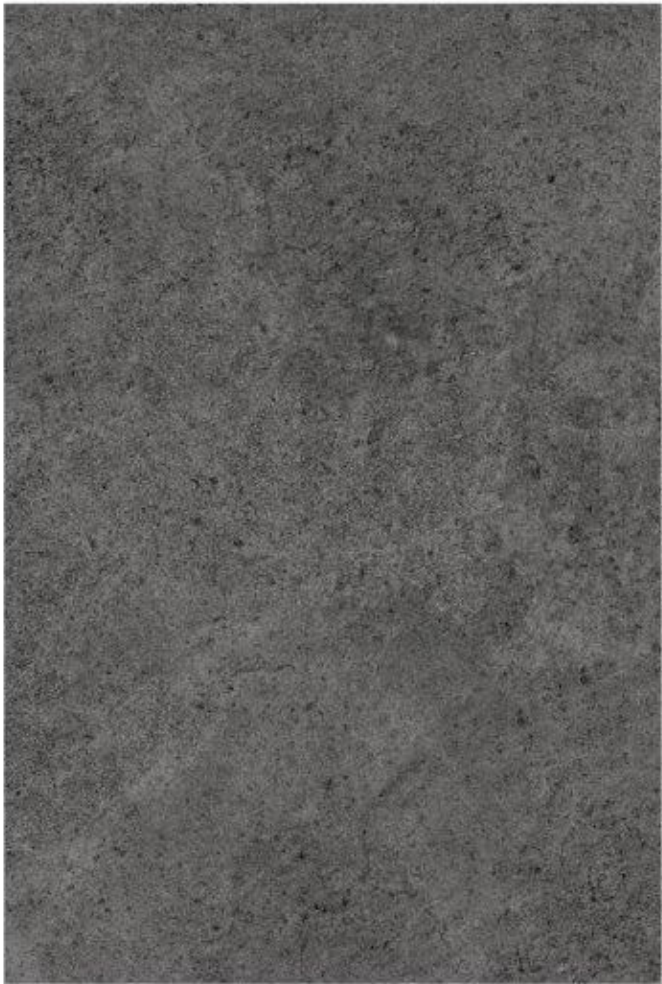
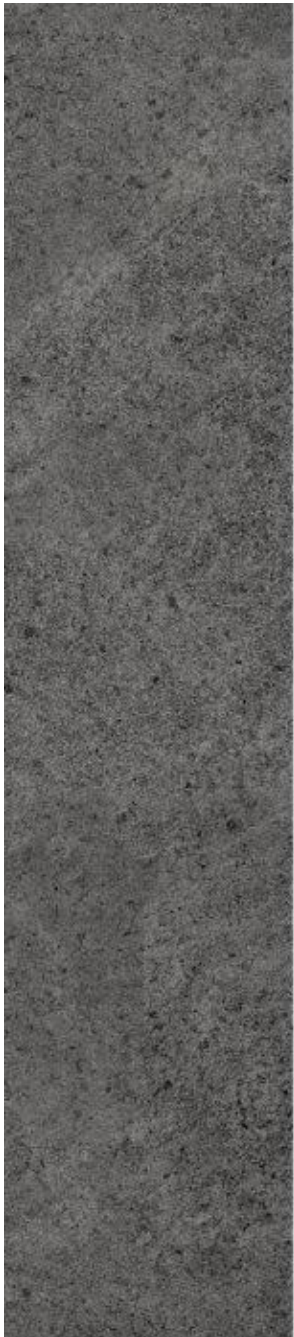
4 size Patio pack

13 No. 900x600 mm.	13 No. 600x297 mm.
13 No. 600x600 mm.	9 No. 297x297 mm.

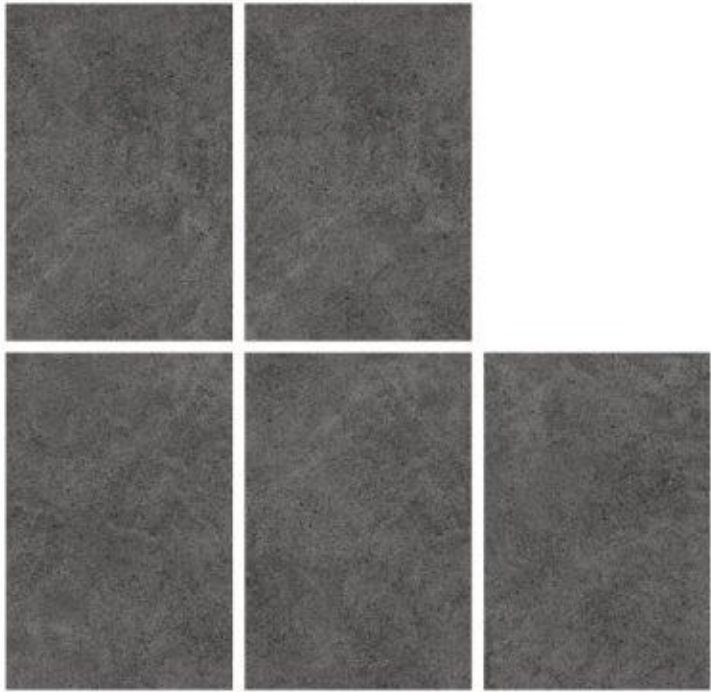
pallet packing

MT/CRATE	SQFT/CRATE	IN KGS/CRATE	CRATE/CTN	IN KGS/CTN
14.85	159.824	750	36	27000 kgs.

COLOR CODE:- PSM 24



20mm thickness
600x900 mm.
Heavy Duty Outdoor Tiles



pallet packing

SIZE	WEIGHT/BOX	PCS/BOX	WEIGHT/PLT	BOXES/EMPTY PLT	PLT/CTN	BOXES/CTN	MT ³ /BOX	MT ³ /PLT	MT ³ /CTN	WEIGHT/CTN
600x900 mm. 20mm	24.5 kg.	1	30 kg.	40	28	1120	0.54	21.6	604.8	27480

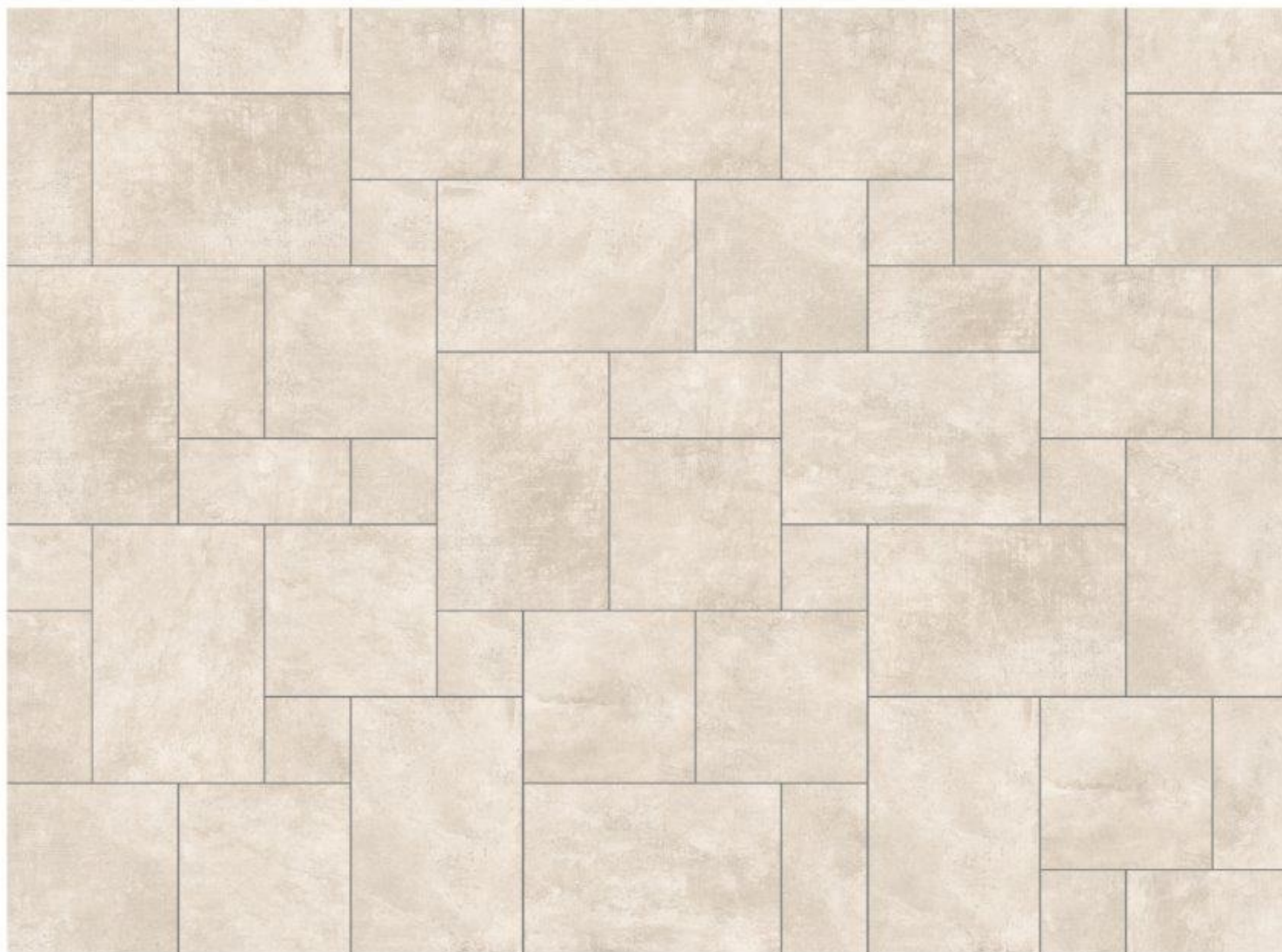
COLOR CODE:- PSM 24



COLOR CODE:- PSM 24



COLOR CODE:- PSM 24



20mm thickness
Heavy Duty Outdoor Tiles

4 size Patio pack

13 No. 900x600 mm.	13 No. 600x297 mm.
13 No. 600x600 mm.	9 No. 297x297 mm.

pallet packing

MT/ CRATE	SQFT/ CRATE	IN KGS/ CRATE	CRATE/ CTN	IN KGS/ CTN
14.85	159.824	750	36	27000 kgs.

COLOR CODE:- PSM 25



20mm thickness
600x900 mm.
Heavy Duty Outdoor Tiles



pallet packing

SIZE	WEIGHT/BOX	PCS/BOX	WEIGHT/PLT	BOXES/ EMPTY PLT	PLT/CTN	BOXES/CTN	MT/BOX	MT/PLT	MT/CTN	WEIGHT/CTN
600x900 mm 20mm	24.5 kg	1	30 kg	40	28	1120	0.54	27.0	604.8	27486

COLOR CODE:- PSM 25



COLOR CODE:- PSM 25



COLOR CODE:- PSM 25



20mm thickness
Heavy Duty Outdoor Tiles

4 size Patio pack

13 No. 900x600 mm.	13 No. 600x297 mm.
13 No. 600x600 mm.	9 No. 297x297 mm.

pallet packing

MT ³ / CRATE	SQFT/ CRATE	IN KGS/ CRATE	CRATE/ CTN	IN KGS/ CTN
14.65	159.824	750	36	27000 kgs.

COLOR CODE:- PSM 26



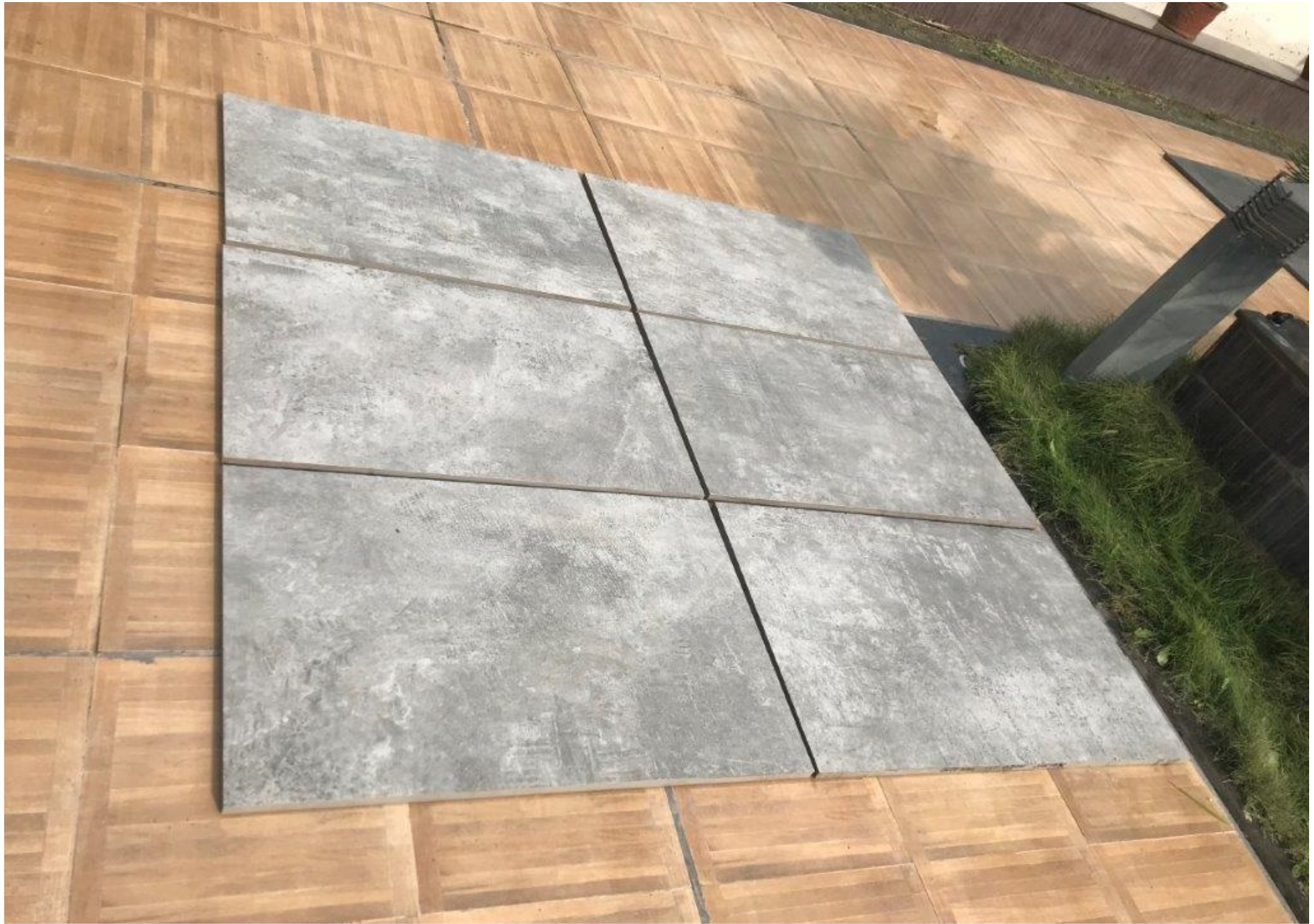
20mm thickness
600x900 mm.
Heavy Duty Outdoor Tiles



palet packing

SIZE	WEIGHT/BOX	PCS/BOX	WEIGHT/PLT	BOXES/EMPTY PLT	PLT/CTN	BOXES/CTN	MT ³ /BOX	MT ³ /PLT	MT ³ /CTN	WEIGHT/CTN
600x900 mm 20mm	24.5 kg	1	30 kg	40	28	1120	0.54	21.0	604.8	27480

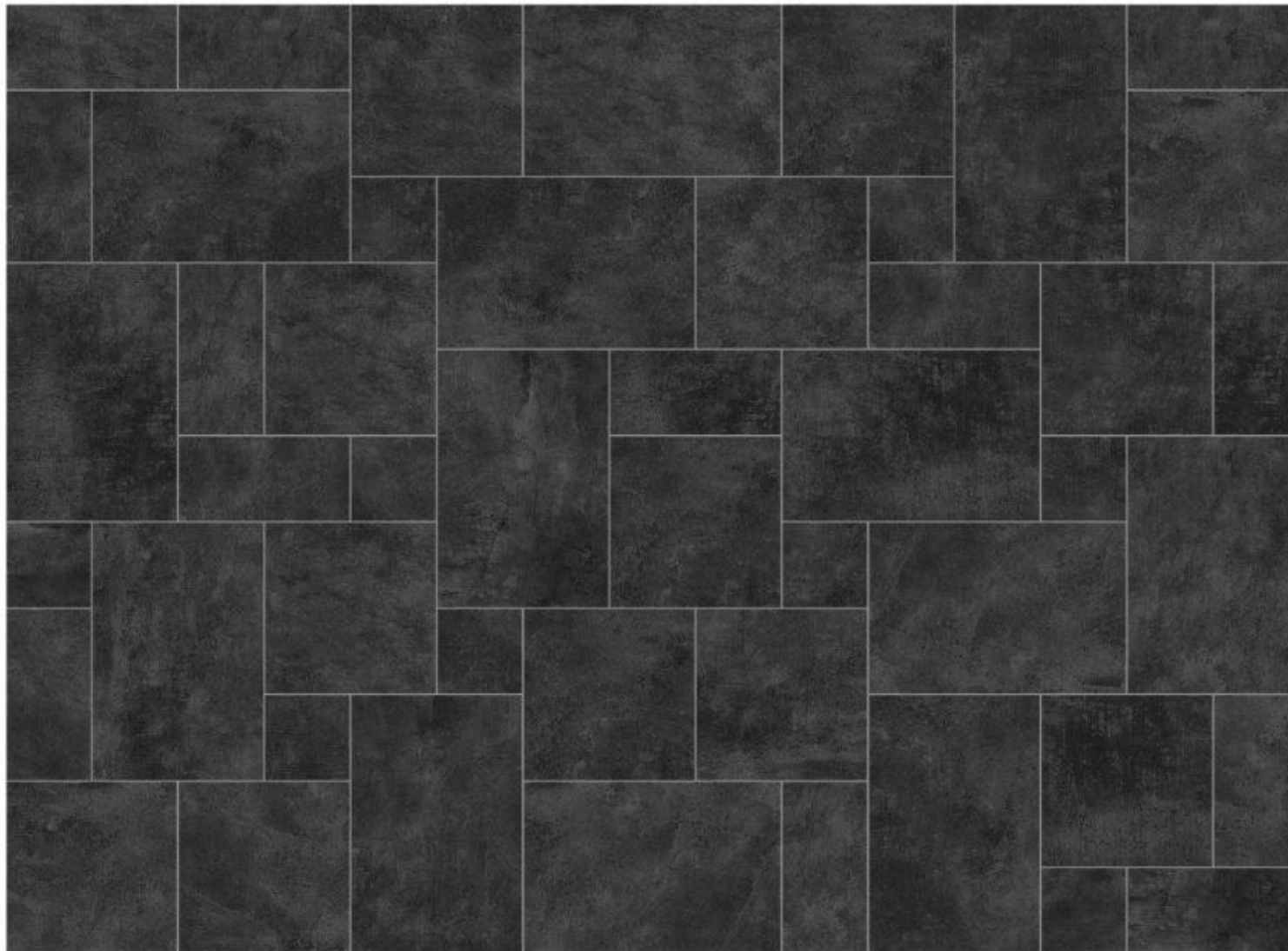
COLOR CODE:- PSM 26



COLOR CODE:- PSM 26



COLOR CODE:- PSM 26



20mm thickness
Heavy Duty Outdoor Tiles

4 size Patio pack	
13 No. 900x600 mm.	13 No. 600x297 mm.
13 No. 600x600 mm.	9 No. 297x297 mm.

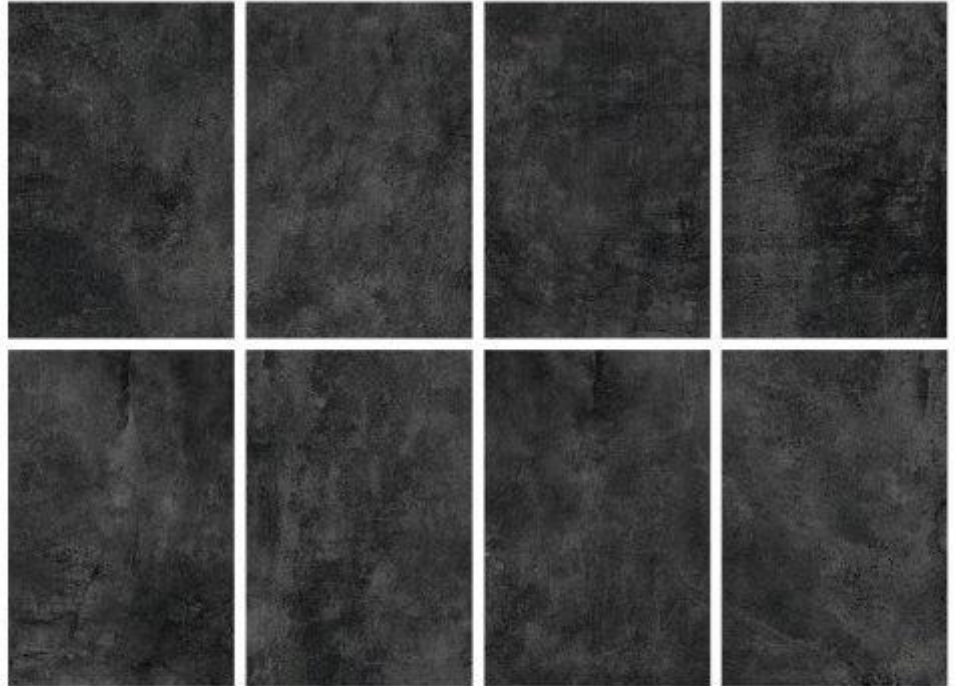
pallet packing

MT ³ / CRATE	SOFT/ CRATE	IN KGS/ CRATE	CRATE/ CTN	IN KGS/ CTN
14.85	159.824	750	36	27000 kgs.

COLOR CODE:- PSM 27



20mm thickness
600x900 mm.
Heavy Duty Outdoor Tiles



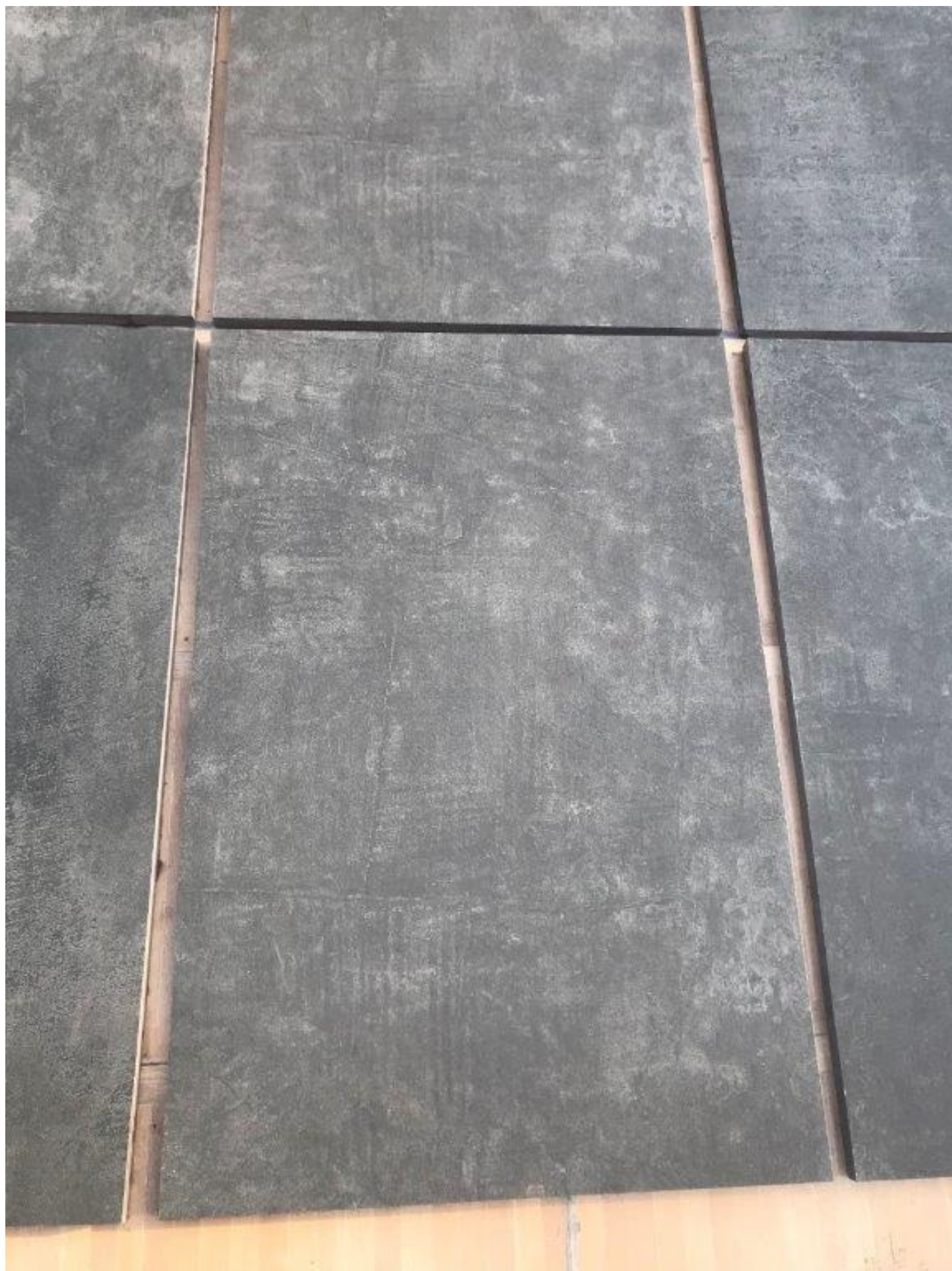
pal et packing

SIZE	WEIGHT/BOX	PCS/BOX	WEIGHT/PLT	PCS/EMPTY PLT	PLT/CTN	PCS/CTN	MT/BOX	MT/PLT	MT/CTN	WEIGHT/CTN
600x900 mm. 20mm	24.5 kg	1	30 kg	40	25	1120	0.34	21.0	604.5	27400

COLOR CODE:- PSM 27



COLOR CODE:- PSM 27



COLOR CODE:- PSM 27



20mm thickness
Heavy Duty Outdoor Tiles

4 size Patio pack

13 No. 900x600 mm.	13 No. 600x297 mm.
13 No. 600x600 mm.	9 No. 297x297 mm.

pallet packing

MT/ CRATE	SOFT/ CRATE	IN KGS/ CRATE	CRATE/ CTN	IN KGS/ CTN
14.85	159.824	750	36	27000 kgs.

COLOR CODE:- PSM 28



20mm thickness
600x900 mm.
Heavy Duty Outdoor Tiles



palet packing

SIZE	WEIGHT/BOX	PCS/BOX	WEIGHT/PLT	WEIGHT/EMPTY PLT	PLT/CTN	BOXES/CTN	MT/BOX	MT/PLT	MT/CTN	WEIGHT/CTN
600x900 mm. 20mm	24.5 kg	1	30 kg	40	28	1120	0.64	21.6	604.8	21496

COLOR CODE:- PSM 28



COLOR CODE:- PSM 28



COLOR CODE:- PSM 28



20mm thickness
Heavy Duty Outdoor Tiles

4 size Patio pack

13 No. 900x600 mm.	13 No. 600x297 mm.
13 No. 600x600 mm.	9 No. 297x297 mm.

pallet packing

MT/ CRATE	SQFT/ CRATE	IN KGS/ CRATE	CRATE/ CTN	IN KGS/ CTN
14.85	159.824	750	36	27000 kgs.

COLOR CODE:- PSM 29



20mm thickness
600x900 mm.
Heavy Duty Outdoor Tiles



palette packing

SIZE	WEIGHT/BOX	PCS/BOX	WEIGHT/PLT	BOXES/EMPTY PLT	PLT/CTN	BOXES/CTN	MT ³ /BOX	MT ³ /PLT	MT ³ /CTN	WEIGHT/CTN
600x900 mm. 20mm	24.5 kg.	1	30 kg.	40	28	1120	0.54	21.6	604.8	27480

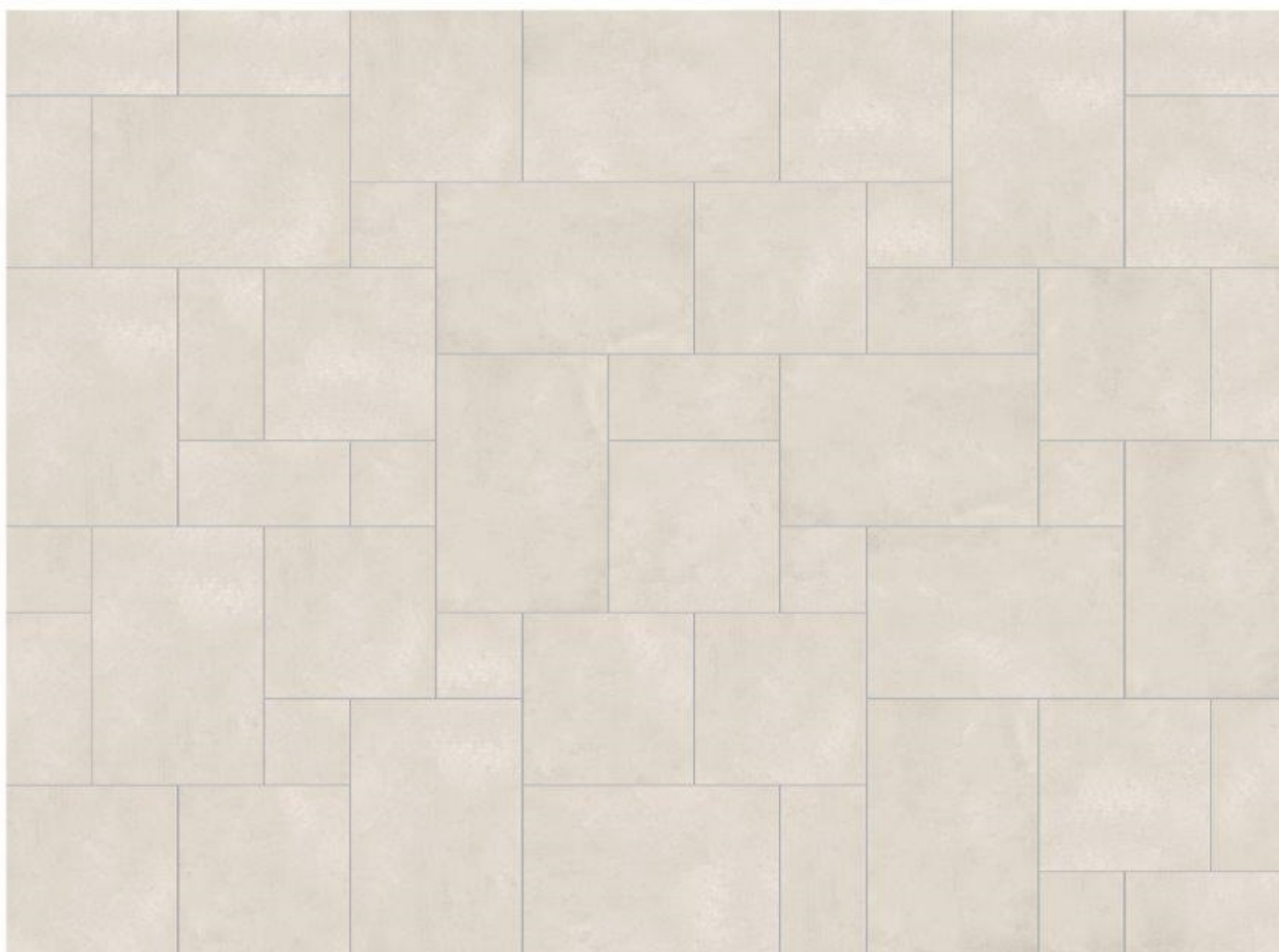
COLOR CODE:- PSM 29



COLOR CODE:- PSM 29



COLOR CODE:- PSM 29



20mm thickness
Heavy Duty Outdoor Tiles

4 size Patio pack

13 No. 900x600 mm.	13 No. 600x297 mm.
13 No. 600x600 mm.	9 No. 297x297 mm.

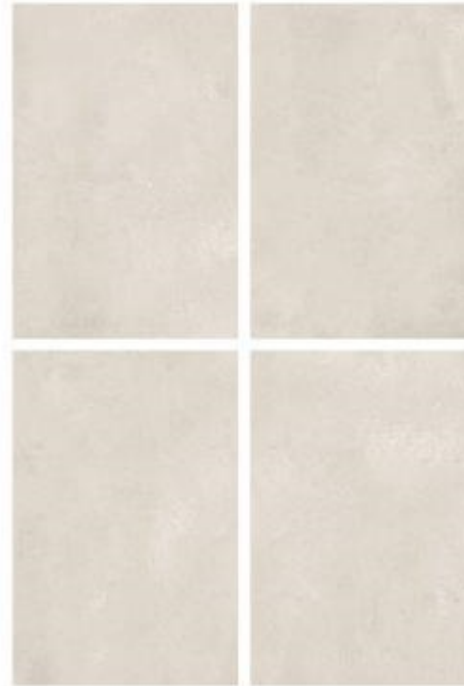
pallet packing

MT/ CRATE	SQFT/ CRATE	IN KGS/ CRATE	CRATE/ CTN	IN KGS/ CTN
14.85	159.824	750	36	27000 kgs.

COLOR CODE:- PSM 30



20mm thickness
600x900 mm.
Heavy Duty Outdoor Tiles



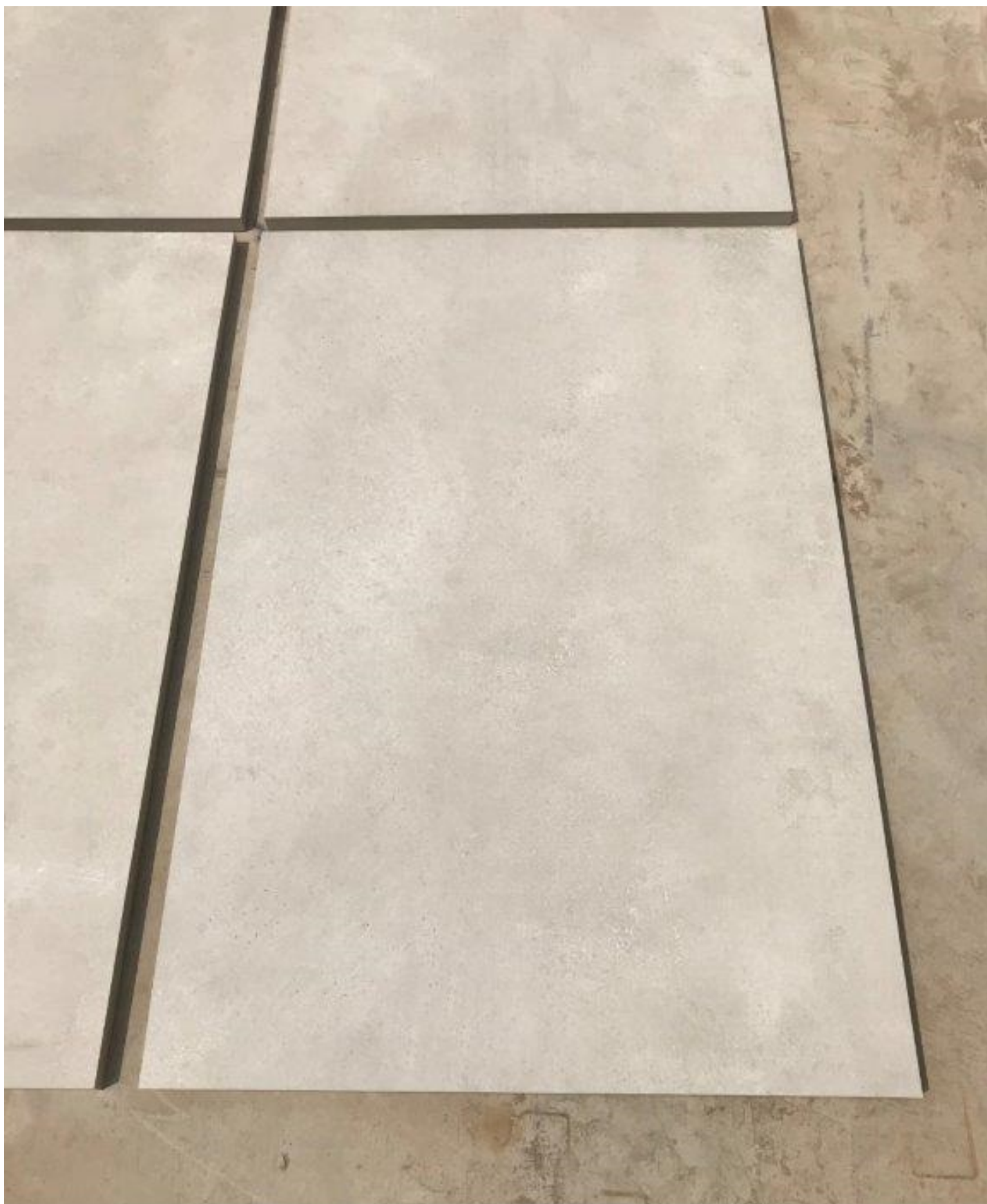
palette packing

SIZE	WEIGHT/BOX	PCS/BOX	WEIGHT/PLT	BOXES/ EMPTY PLT	PLT/CTN	BOXES/CTN	MT ³ /BOX	MT ³ /PLT	MT ³ /CTN	WEIGHT/CTN
600x900 mm. 20mm	24.5 kg.	1	30 kg.	40	28	1120	0.54	21.6	604.8	27493

COLOR CODE:- PSM 30



COLOR CODE:- PSM 30



COLOR CODE:- PSM 30



20mm thickness
Heavy Duty Outdoor Tiles

4 size Patio pack	
13 No. 900x600 mm.	13 No. 600x297 mm.
13 No. 600x600 mm.	9 No. 297x297 mm.

pallet packing

MT/	SOFT/	IN KGS/	CRATE/	IN KGS/
CRATE	CRATE	CRATE	CTN	CTN
14.85	159.824	750	36	27000 kgs.

COLOR CODE:- PSM 31



20mm thickness
600x900 mm.
Heavy Duty Outdoor Tiles



pallet packing

SIZE	WEIGHT/BOX	PCS/BOX	WEIGHT/PLT	BOXES/ EMPTY PLT	PLT/CTN	BOXES/CTN	MT ³ /BOX	MT ³ /PLT	MT ³ /CTN	WEIGHT/CTN
600x900 mm. 20mm	24.5 kg.	1	30 kg.	40	28	1120	0.54	21.6	604.8	27488

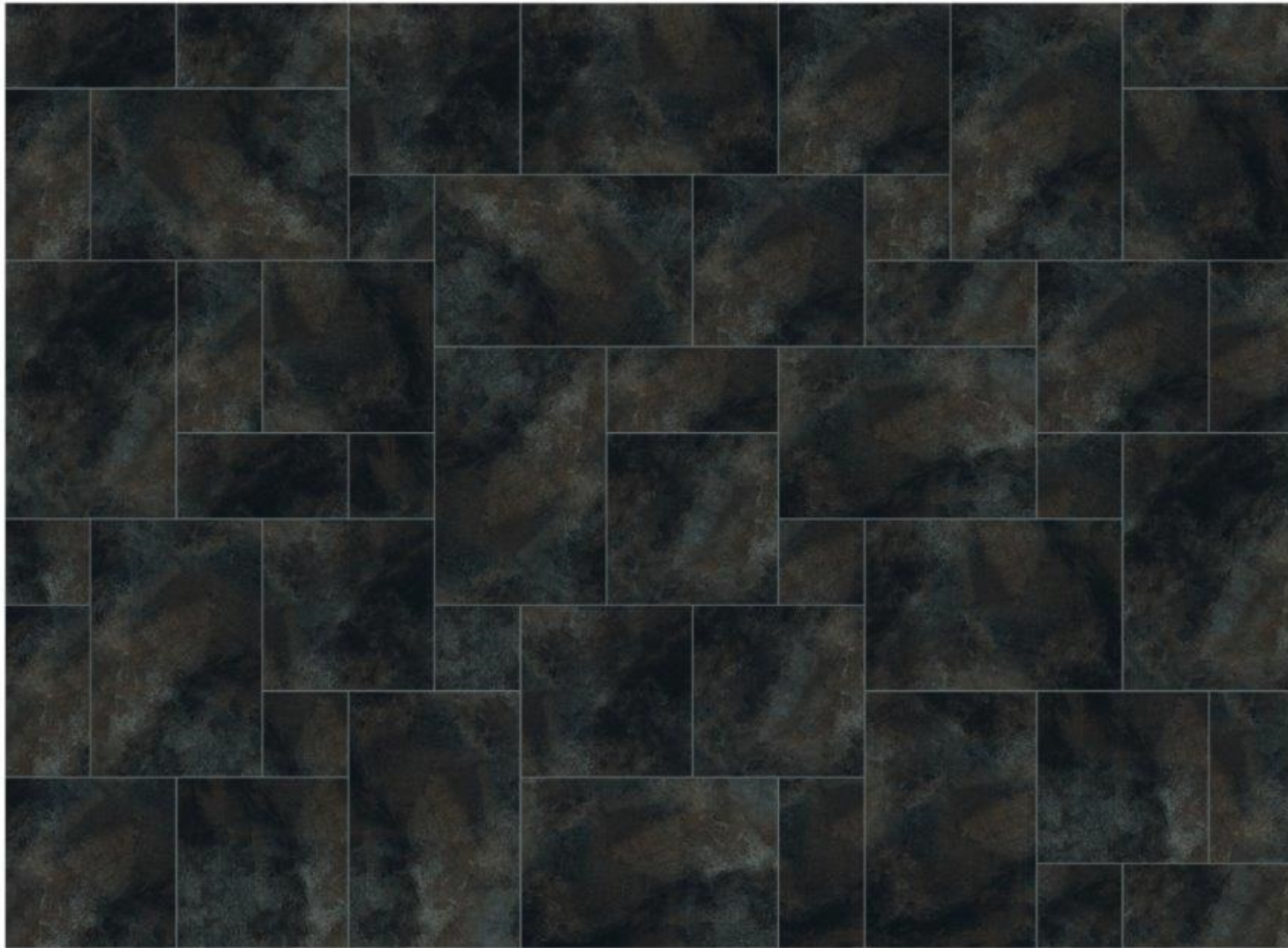
COLOR CODE:- PSM 31



COLOR CODE:- PSM 31



COLOR CODE:- PSM 31



20mm thickness
Heavy Duty Outdoor Tiles

4 size Patio pack

13 No. 900x600 mm.	13 No. 600x297 mm.
13 No. 600x600 mm.	9 No. 297x297 mm.

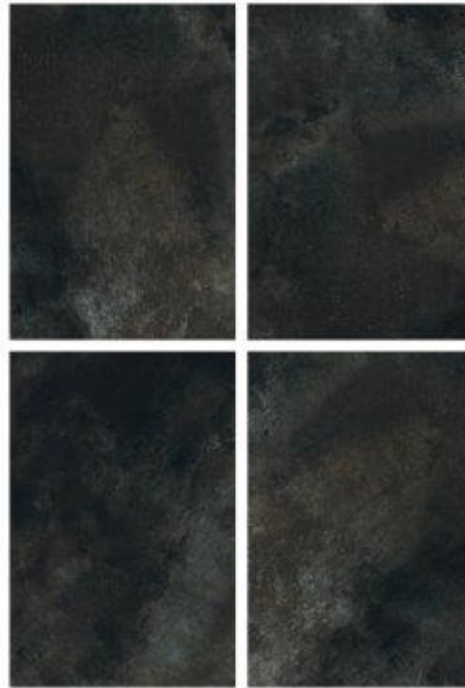
pallet packing

MT/ CRATE	SQFT/ CRATE	IN KGS/ CRATE	CRATE/ CTN	IN KGS/ CTN
14.85	159.824	750	36	27000 kgs.

COLOR CODE:- PSM 32



20mm thickness
600x900 mm.
Heavy Duty Outdoor Tiles



palette packing

SIZE	WEIGHT/BOX	PCS/BOX	WEIGHT/PLT	BOXES/ EMPTY PLT	PLT/CTN	BOXES/CTN	MT ² /BOX	MT ² /PLT	MT ² /CTN	WEIGHT/CTN
600x900 mm. 20mm	24.5 kg.	1	30 kg.	40	28	1120	0.54	21.6	604.8	27480

COLOR CODE:- PSM 32